



New Construction ECP Helical Torque Anchor™

All across the country the engineering community has been specifying helical piles for deep foundation support. Foundations are subject to soil conditions that are in a constant flux. Shifting and unstable soils put at risk the structural integrity of a foundation. ECP Helical Torque Anchors™ can be installed prior to the start of foundation construction to negate the effects of the adjusting soil conditions.

Helical Torque Anchors™ are hydraulically advanced into the ground to a predetermined depth based on soil data and by measuring torque during installation. The amount of torque required to install a helical anchor relates to its installed ultimate capacity. The piles are installed at intervals between the footing forms and tie into the steel grid-work prior to pouring concrete.



ECP Helical Torque Anchor™

The Very Best!



Benefits

- Decreased Installation Time
- No Concrete Delays
- All Weather Installation
- Verifiable Capacity
- Installs Below Active Soil Layers
- Low Installation Cost

**EARTH
CONTACT
PRODUCTS**

1-866-327-0007

15612 S Keeler Terr.

Olathe, Ks 66062

Phone: 913-393-0007

Fax: 913-393-0008

info@getecp.com

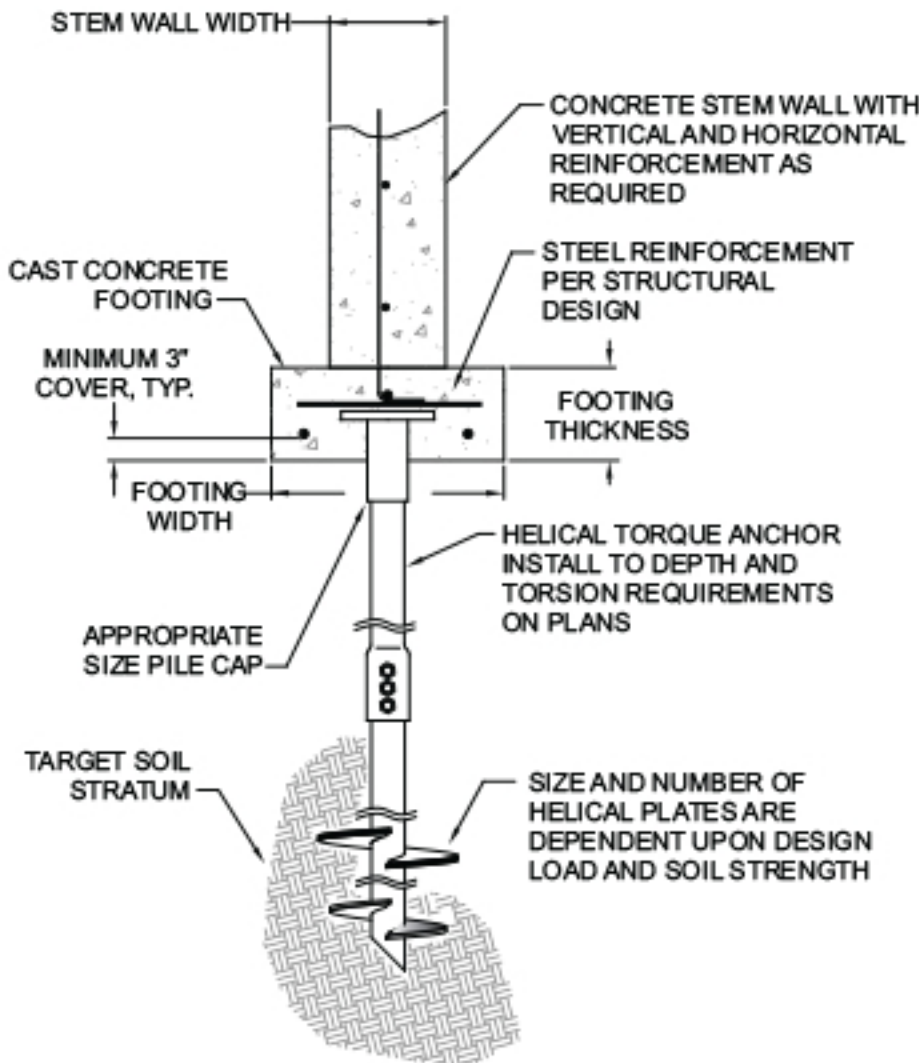
www.getecp.com

ECP



Capacities of ECP Helical Torque Anchors™

Shaft Size	Installation Torque Factor (k)	Axial Compression Load Limit	Ultimate Tension Strength	Useable Torsional Strength	Practical Load Limit Based Torsional
1-1/2" Square Bar	9 - 11	70,000 lb.	70,000 lb.	7,000 ft-lb	70,000 lb
1-3/4" Square Bar	9 - 11	100,000 lb.	100,000 lb.	11,000 ft-lb	110,000 lb
2" Square Bar	10 - 12	200,000 lb.	200,000 lb.	23,000 ft-lb	200,000 lb
2-7/8" Tubular - 0.203"	8 - 9	60,000 lb.	60,000 lb.	5,500 ft-lb	44,000 lb
2-7/8" Tubular - 0.262"	8 - 9	100,000 lb.	100,000 lb.	9,500 ft-lb	80,000 lb
3-1/2" Tubular - 0.300"	7 - 8	115,000 lb.	120,000 lb.	13,000 ft-lb	97,000 lb
4-1/2" Tubular - 0.337"	6 - 7	160,000 lb.	160,000 lb.	22,000 ft-lb	143,000 lb



Advantages

- Installs In Areas of Limited Access
- Can Be Loaded Immediately
- Installs With Small Equipment
- Designed & Engineered To Perform
- Installs With Little or No Vibration
- Soil Removal from Site Unnecessary

EARTH CONTACT PRODUCTS

1-866-327-0007

15612 S Keeler Terr.
Olathe, Ks 66062
Phone: 913-393-0007
Fax: 913-393-0008
info@getecp.com
www.getecp.com

ECP