

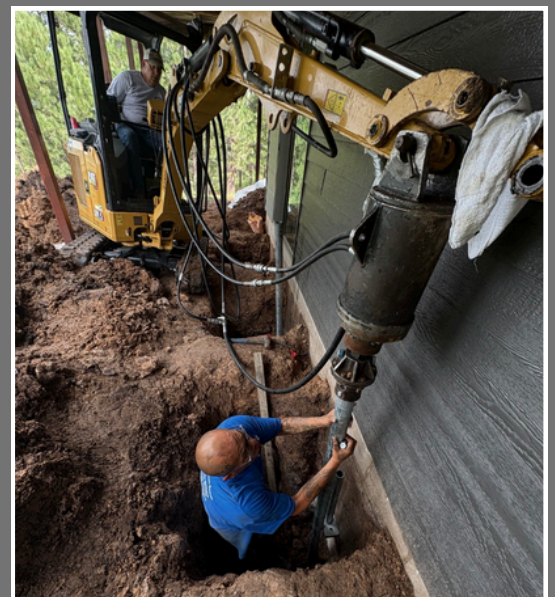
Spearfish House

Wrap-Around Porch Stabilized with Helical Piers

RESIDENTIAL PROJECT OF THE YEAR FINALIST



The Spearfish house, a one story home with a walkout basement, settled in its right rear corner 1-1/2 inches. The settlement caused the doors to jam and drywall to crack.



The Rapid Foundation Repair team used 5 helical piers with underpinning brackets on the south side of the house to bring it back to its proper elevation.

Some locations were hand dug, others utilized an excavator. After excavating, they chipped the footing for the brackets, then installed the helical piles 28 feet below grade.



After lifting the foundation 1-1/2 inches, the doors moved smoothly. The 5 pier project was completed in just 2 days.