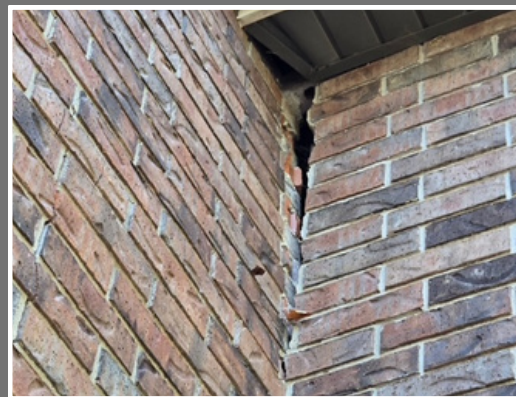




Facade Fixed Push Piers Rectify Toppling Bricks

GIRARD, KANSAS
RESIDENTIAL PROJECT OF THE YEAR FINALIST

Pitt Foundation Repair was called out to tackle a home in Girard, Kansas. The front porch of the home was pulling away and settling on the front portion of the footing, leaving a substantial gap between the home and the front porch. In doing so, it also pulled the brick facade away from the home.



The brick facade and porch pulling away from the home's skeletal structure posed a challenge to Pitt's team. The porch in question is 24 feet tall with an 8-foot base. With such a narrow base, the challenge lied in getting the porch to pivot at the adjoining footings so they could lift it back to its original elevation, and stabilize the structure without the brick facade collapsing, all while keeping the pivot point at its original location.

To solve the conundrum, they used six (6) ECP PPB-250 brackets with PPB-200 push pier pipe. Two (2) were placed on the north side of the porch to stabilize and control the lift. The other four (4) piers were placed along the front (west) side of the porch. They also braced the front of the porch with deadheads to prevent the pillars from tipping too far off the front, where they were already leaning. They also utilized tie downs to pull the pillars back toward the home.



Installers names: Mike Hanika, Cooper Ratzlaff, Leo Perez, Nino Perez, Heriberto Perez, Emerson Perez.