

DESIGNED AND ENGINEERED TO PERFORM

OUR EARTH
OUR COMMUNITY
OUR PARTNERS

Your Partners in Foundation Repair



Grow Your Business with ECP

Earth Contact Products has a very simple mission – "To be the very best manufacturer in our industry by providing quality products and services in a timely manner at a competitive price."

Driven to excellence for our family of Partners



As patent and trademark holders on over 18 items, our Engineering Department strives to supply the very best service and support to our partners. Based in the heart of a country that was built on service and reliability ECP has continued to carry this torch throughout its existence. ECP proudly manufactures environmentally friendly helical anchors and foundations in our 100,000-sq. ft. 8-acre facility centrally located in Olathe, KS. We proudly employ over 110 employees that are certified and trained in our industry. When time is of the essence, count on ECP to provide you with the highest quality products and 24/7 dealer support.

LEADERS IN FOUNDATION REPAIR

ECP FOUNDATION REPAIR PRODUCTS



Push Piers

The ECP Steel Push Pier System is a permanent solution for your home's settling foundation. It provides you the very best option to repair your foundation back to level. Steel piers are hydraulically driven through our patented steel bracket to a load bearing stratum, as the entire structure works as the reaction.



Slab Repair

A sunken slab should be repaired right away to avoid tripping hazards and to maintain the curb appeal for your real estate investment. ECP's helical piers and push piers will lift and support a sunken slab back to being level, giving you a fresh new look for your number one investment.



Wall Repair

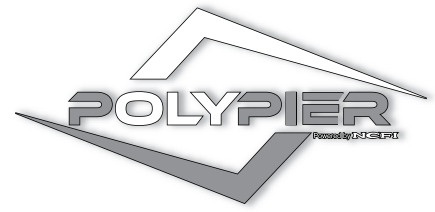
ECP Plate Anchors Plate Anchors are the most economical method for providing supplemental lateral force to help stabilize bowed and cracked walls affected by hydrostatic pressures.



Helical Piers

The ECP Helical Pier System permanently solves your home's settling foundation problem. This system provides you the very best option to repair your foundation back to level. Helical anchors are hydraulically installed to a predetermined torque to support the weight of your house. Our patented brackets are then installed to support the structure.





PolyPier

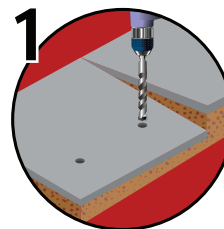
Proudly Designed and
Manufactured in the USA



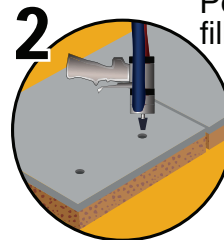
ECP's PolyPier system is the product of choice for concrete lifting, leveling, void filling and undersealing streets, roads, highways and making repairs to bridge approaches and departures. These systems are available in various high-density formulations, compression and tensile strength values, and flow variations.

Expanding, high-density foam is engineered to permanently raise and level sunken concrete in many different applications.

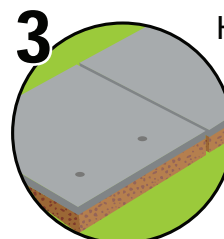
The PolyPier® system provides a new, state-of-the-art solution to a very old problem: sinking or settling concrete. Virtually every type of concrete flatwork (slabs, sidewalks, driveways, runways, patios, and more) will be susceptible to sinking if the supporting soil is loose, weak or prone to compression. Concrete will also sink when support soil is washed away.



1 Holes are drilled



2 Polyurethane foam is injected, filling voids and lifting slab



3 Holes are patched



ECP FOUNDATION REPAIR PRODUCTS



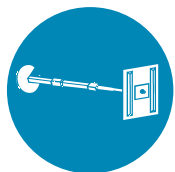
New Construction

All across the United States, the engineering community specifies helical piles for new construction projects. They are specifically designed to eliminate shifting and moving in unstable soil, as well as to improve the structural integrity of foundations.



Waterproofing

ECP's waterproofing products protect your home or building against moisture. Our methods include exterior waterproofing, interior waterproofing, and crawl space encapsulation. We have waterproofing contractors to assist you in keeping your basement or crawl space dry.



Helical Wall Tiebacks

Helical wall tiebacks are designed to straighten or strengthen basement and retaining walls. This method of shoring has become very popular with the engineering community due to their strength and ease of measuring capacity.

Helical tiebacks are used for many applications including:

- Sea Walls
- Basement Walls
- Retaining Walls
- Shoring
- Temporary Wall Support
- Tilt Up Construction

ECP offers both interior and exterior waterproofing to help reduce flooding in those exterior hardscape and landscape areas and to stop moisture and condensation in its tracks on the interior of your home or business.

Our exterior waterproofing products include:

- Channel Drains
- Drywells
- Surface Drains

ECP's interior waterproofing products include:

- Sump pumps
- Sump basin
- Interior drainage
- Crack injection
- Carbon fiber repair

Our History

- 1999 - Earth Contact Products LLC was established
Received Patent for PPB-350
- 2000 - Introduced Helical Product Line - ECP Torque Anchors™
- 2002 - Introduced PPB-300 Pier (2-7/8" Push Pier)
Introduced the Design and Technical Service Manual
- 2006 - Introduced Slab Pier Lifting System
- 2007 - Introduced Utility Division
- 2008 - Introduced Waterproofing Division
- 2011 - Received RUS Certification for Utility Industry
- 2014 - Received Patent on Micropile Bracket - PPB-350MP2
- 2017 - Received ICC ESR-3559
- 2017 - Introduced new Logo and Mission Statement:
"Driven to excellence for our family of Partners"
- 2018 - Introduced PolyPier Division

Our Team

Partner with Us



getecp.com
info@getecp.com

15612 South Keeler Terrace
Olathe, KS 66062
866-327-0007