

POLYPIER SYSTEM

Earth Contact Products: Providing You
The Very Best Solution for Your Foundation Problems



POLYPIER INFO

PolyPier is an expanding, high-density foam engineered to permanently raise and level sunken concrete in many different applications.

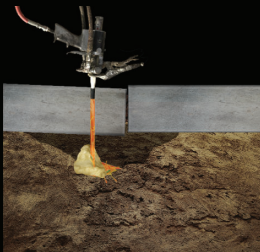
PolyPier offers numerous advantages, including

- Lightweight nature
- High expansion capability
- Compressive strength

These qualities make PolyPier an ideal choice for concrete lifting applications, ensuring minimal intrusion into the existing structure while providing reliable and long-lasting support. The foam's expansive properties allow for a precise and controlled lift, addressing voids and stabilizing the foundation with accuracy.

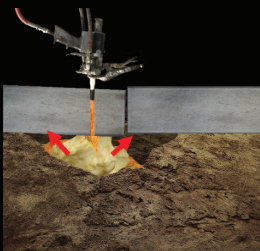


HOW IT WORKS



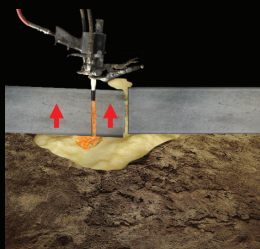
DRILL

Small, strategically placed holes are drilled into the concrete to allow access beneath the slab.



INJECT

PolyPier is injected through the holes, expanding to fill voids and stabilize the foundation.



LIFT

As the foam expands, it gently lifts the concrete slab back to its original position

APPLICATIONS

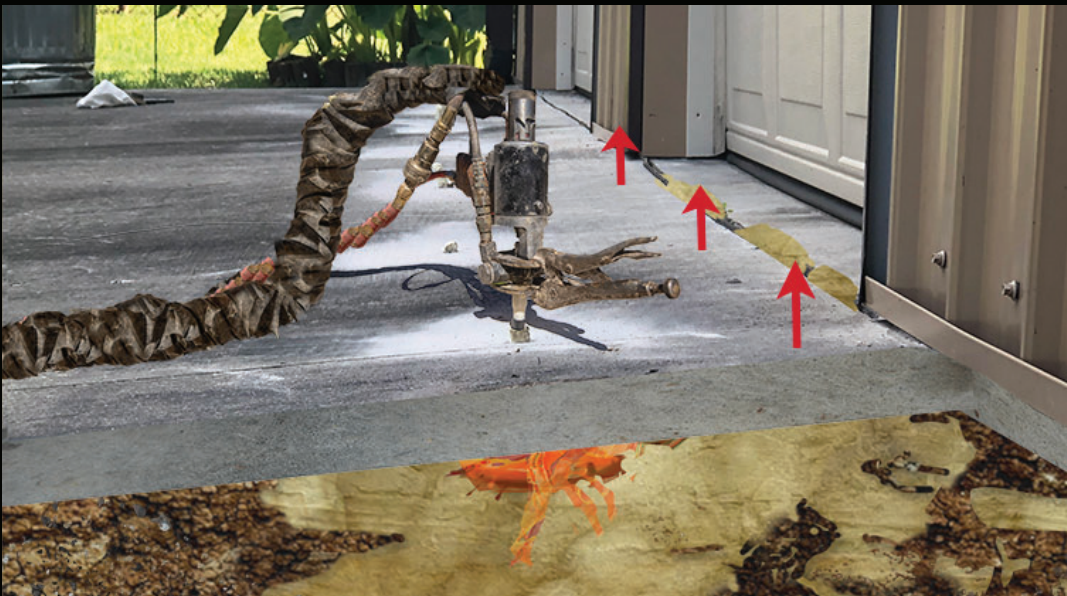


Whether it's a driveway, sidewalk, patio, or foundation, PolyPier provides a non-intrusive and cost-effective alternative to traditional methods.

PolyPier is beneficial for residential projects where minimizing disruption and preserving landscaping are crucial considerations.

WHY POLYPIER

PolyPier stands out as a homeowner's go-to solution for restoring concrete surfaces with minimal hassle. Its innovative design ensures a seamless blend of efficiency, durability, and precision, making it the perfect choice for those looking to maintain the integrity and appearance of their property. With a focus on reducing disruption and achieving quick results, PolyPier not only addresses immediate issues like uneven or sunken slabs but also helps prevent future settling. This solution offers homeowners peace of mind, knowing that their patios, driveways, or foundations are stabilized with a method that's both advanced and environmentally considerate.




DESIGNED AND ENGINEERED TO PERFORM



For over 25 years, Earth Contact Products (ECP) has been the industry leader in structural support solutions. With over 18 patents and trademarks, we deliver innovative, high-quality products that are Designed and Engineered to Perform. Backed by a full manufacturer's warranty, we don't just meet industry standards—we set them, driving growth and technological advances across the industry. Proudly made in the USA, our products ensure lasting performance and peace of mind.

- Manufacturer Direct
- Engineering Support
- Training and Education
- Complete Product Range
- Customized Solutions

 (913) 393-0007

 INFO@GETECP.COM

 WWW.GETECP.COM

