

DESIGNED AND ENGINEERED TO PERFORM



COMMERCIAL



# NEW CONSTRUCTION

PROVIDING YOU THE VERY BEST SOLUTION  
FOR YOUR FOUNDATION PROBLEMS

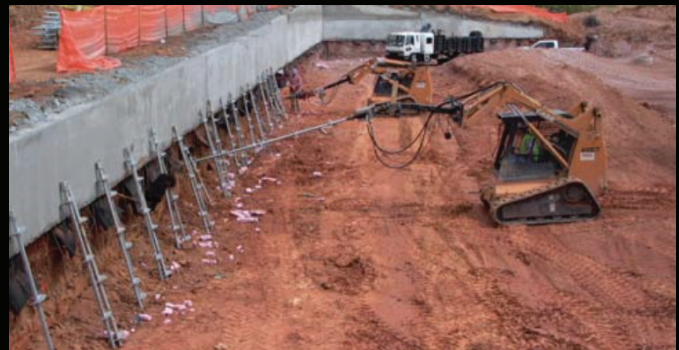
# HELICAL PIERS

When poor soil conditions are found on a construction site, a deep foundation system must be utilized. Helical Piles can often be the best solution in these cases. Earth Contact Products offers a complete Line of helical piles, extensions, and accessories. Our standard product line ranges from 1-1/2" square bar to 4-1/2" tubular piers.



# HELICAL ANCHORS

Helical Torque Anchors can be used as tiebacks to resist pressure on retaining walls and below grade walls. When soil stabilization is an issue, a system utilizing helical soil nails may be the best solution.



## THE HELICAL ADVANTAGE

- INSTALLS WITH LITTLE TO NO VIBRATION
- NO CONCRETE CURE TIME
- NO SPOILS
- CAN BE LOADED IMMEDIATELY
- INSTALLS TO A FIRM BEARING STRATA
- VERIFIABLE CAPACITY

# BOARDWALK FOUNDATIONS



The ECP Boardwalk Foundation System offers a cost-effective and environmentally friendly alternative to traditional concrete foundations. Utilizing ECP Helical Torque Anchors, contractors can save time and money without disrupting the surrounding terrain or ecosystem. These systems are also easily removable for temporary applications. With a variety of sizes and pile configurations available, ECP can recommend the appropriate pile for your project.

## ADVANTAGES

- NO EXCAVATION
- ENVIRONMENTALLY FRIENDLY
- IMMEDIATE LOADING
- MULTIPLE BRACKET DESIGNS FOR BOARDWALK FOUNDATIONS
- ALL WEATHER INSTALLATION

# DRIVECAST

Drivecast offers rapid installation due to the use of smaller equipment and a scaled-down crew, resulting in increased agility. Drivecast projects are often completed much faster, considering factors such as site access limitations, the number of piles, heavy equipment mobilization, spoils removal, and scheduling conflicts. This faster installation translates to lower costs, with savings realized from reduced need for heavy machinery, smaller crew, less supervision, contaminated soil removal, and minimal disruption to surrounding infrastructure.



## WHY DRIVECAST

- LIMITED ACCESS AND LOW CLEARANCE
- LITTLE-TO-NO SPOILS
- INSTALL WITH EXISTING EQUIPMENT
- NEIGHBORHOOD FRIENDLY INSTALLATION
- LOW MOBILIZATION COSTS
- MINIMAL SITE IMPACT



**DRIVECAST**

# RESISTANCE PIERS

When settlement occurs on commercial foundations, Earth Contact Products line of Push Piers is the best solution. With multiple bracket designs and sizes, ECP can offer The Very Best solution for your project. Resistance piers are driven to end bearing strata and allow the structure to be lifted back to its original position.



## BENEFITS

- INSTALLS TO ROCK OR VERIFIED END BEARING STRATUM
- INSTALLS WITH LITTLE TO NO VIBRATION
- ULTIMATE CAPACITIES UP TO 115,000 LBS



# MICROPILE BRACKET

Earth Contact Products patented micro pile bracket is designed to be used for foundation underpinning with a micro pile shaft. A plate is mounted to the top of the bracket to allow the micro pile to be installed through the bracket opening.





For over a decade, Earth Contact Products (ECP) has grown to the most trusted name for foundation steel products. As patent and trademark holders on over 18 items, we supply the very best products, service and support to our national network of contractors. ECP is dedicated to our contractors and the people that they serve, by providing the highest quality foundation products in the industry and standing behind them with a full manufacturer's warranty.

## WE ARE THE COMPLETE PARTNER FOR YOU

- Manufacturer Direct
- Engineering Support
- Training and Education
- Comprehensive Product Range
- Customized Solutions
- Marketing Support



(913) 393-0007



INFO@GETECP.COM



GETECP.COM

