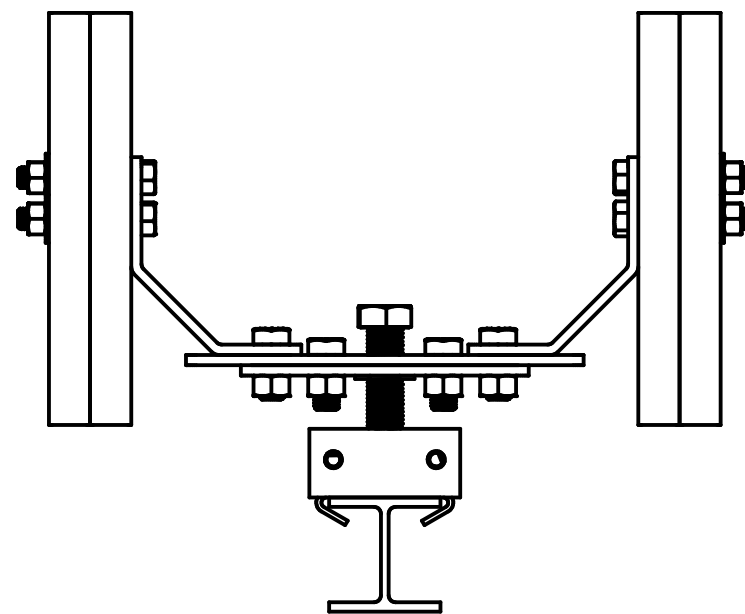
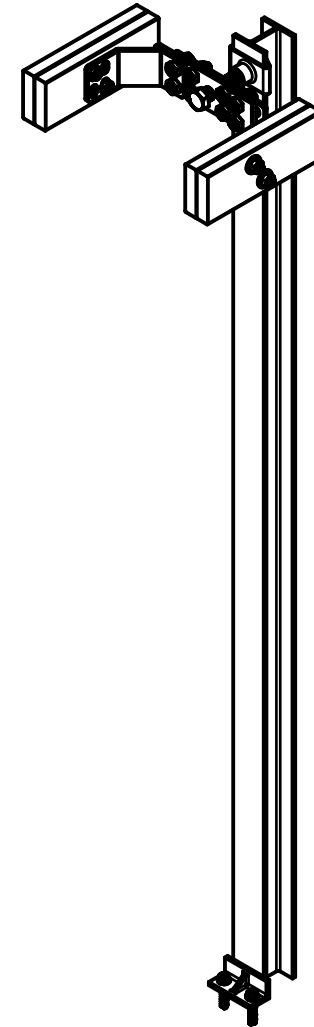
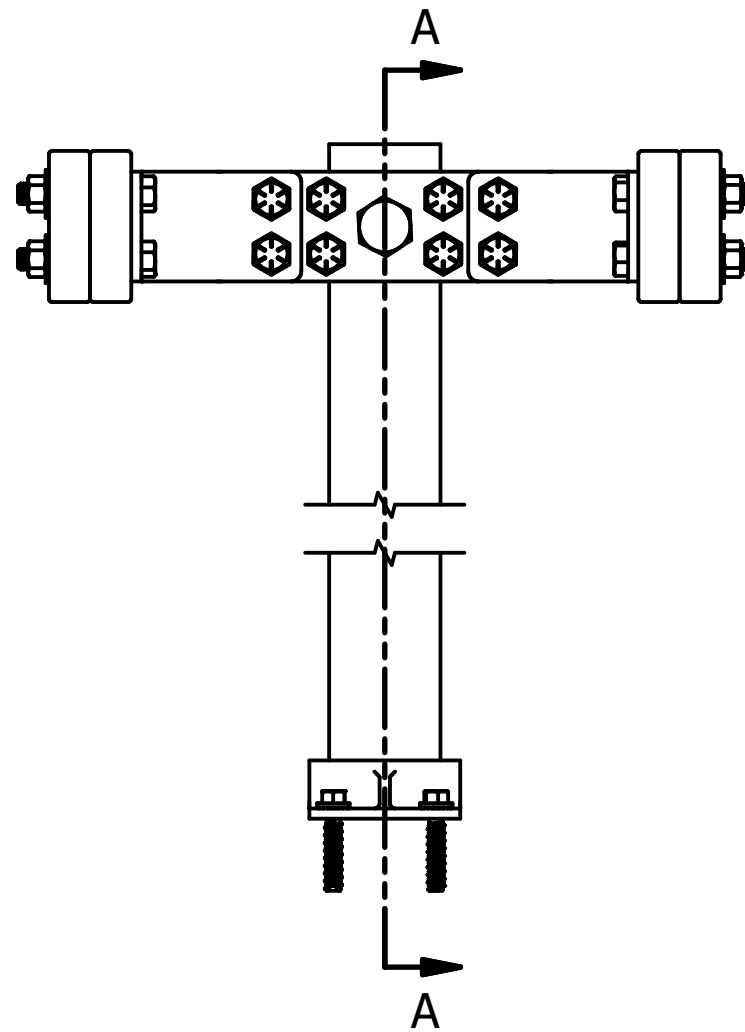


SECTION A-A
SCALE 1/7



NOTES:

1. WALL BRACE CRUX, SUPPORT PLATE, WALL PLATE, BEAM CAPTURE, AND FLOOR BRACKET ARE HOT DIP GALVANIZED PER ASTM A123 (LATEST REV)
2. MAIN HEX BOLT, WOOD BOLTS, CONNECTION SCREWS, WASHERS AND HEX NUTS HAVE ZINC ELECTROPLATED FINISH PER ASTM B633 (LATEST REV.)
3. BRACKET MATERIAL 3/8" THICK HOT ROLLED STEEL PER ASTM A572 MIN. YIELD STRENGTH OF 50 KSI.
4. MANUFACTURER TO HAVE IN EFFECT INDUSTRY RECOGNIZED WRITTEN QUALITY CONTROL FOR ALL MATERIALS AND MANUFACTURING PROCESSES
5. W-4 I-BEAM AND ADDITIONAL JOIST LUMBER NOT INCLUDED

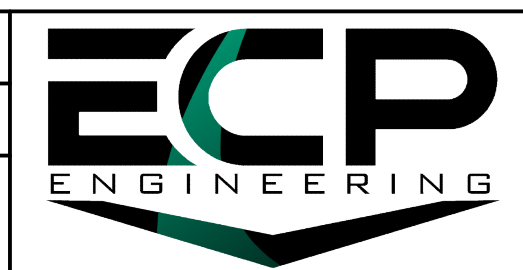
ITEM	QTY	PART NUMBER	DESCRIPTION
1	1	W4 x 13 I-BEAM	I-BEAM
2	1	WBS-FB-RIB	FLOOR BRACKET
3	2	3" CONCRETE SCREW	CONCRETE SCREW
4	1	PPB-125-BC-W4	W4 x 13 BEAM CAPTURE
5	1	1-1/4"-7 THREAD 6" HEX BOLT	MAIN HEX BOLT
6	1	WBS-PER-12	INTERNAL WALL BRACE CRUX
7	1	WBS-PER-8	EXTRA WALL BRACE SUPPORT
8	2	WBS-PER-WP	WALL PLATE
9	4	13/16" ID 1-3/4" OD WASHER	WASHER
10	12	7/8"-9 THREAD 2" LONG SCREW	HEX CONNECTOR SCREW
11	12	7/8"-9 THREAD HEX NUT	CONNECTOR HEX NUT
12	4	3/4"-10 THREAD 4-1/2" SCREW	HEX WOOD BOLT
13	4	3/4"-10 THREAD HEX NUT	WOOD HEX NUT
14	2*	WOOD BEAM*	LUMBER TO SUPPORT JOISTS

DRAWN GDR DATE 2/28/2025

DWG NO. SD-WBS-PER-W4

DESCRIPTION PERPENDICULAR INTERIOR WALL BRACE W4 SYSTEM

NOT TO SCALE ALL UNITS IN INCHES U.N.O.



SIZE B 15612 S KEELER TERRACE OLATHE, KS 66062 (913) 393-0007 | www.GETECP.com

CONFIDENTIAL. THIS DRAWING AND ITS CONTENTS ARE CONFIDENTIAL AND THE EXCLUSIVE PROPERTY OF EARTH CONTACT PRODUCTS, LLC. NO PUBLICATION, DISTRIBUTION, OR COPIES MAY BE MADE WITHOUT THE WRITTEN CONSENT OF ECP. ALL RIGHTS RESERVED UNDER COPYRIGHT LAW.

REV 0 SHEET 1 OF 1