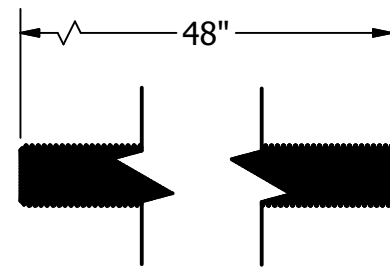
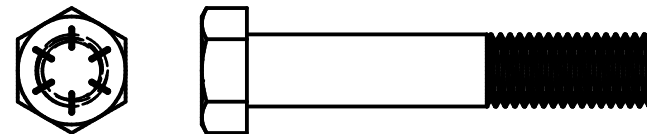
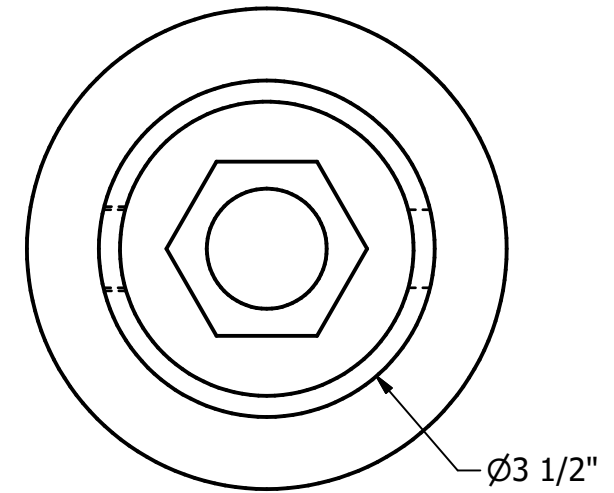
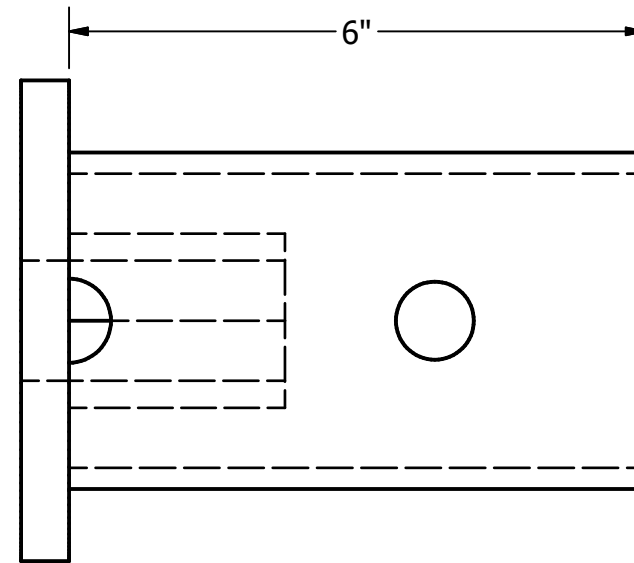
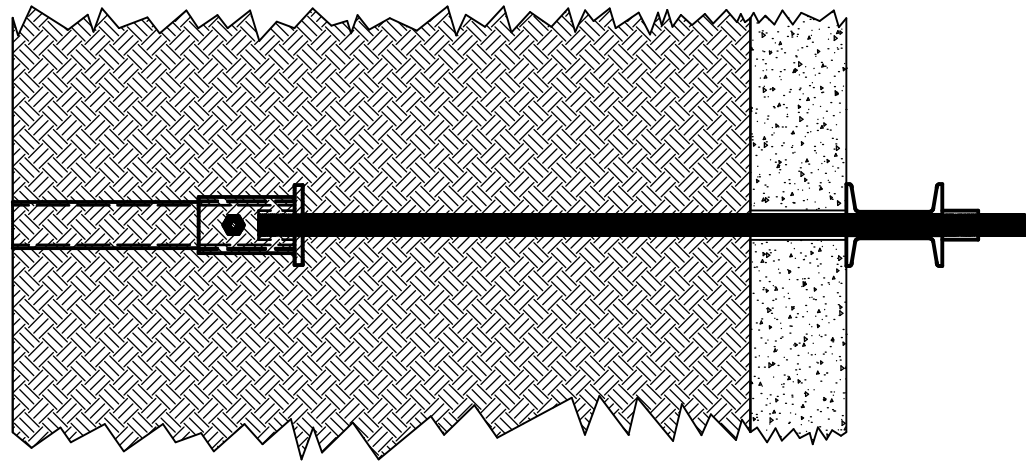
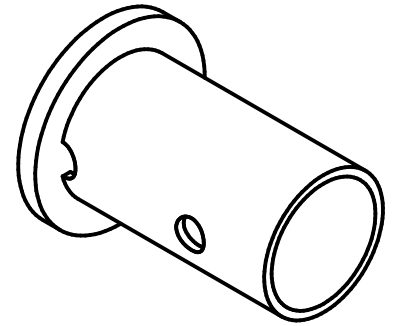


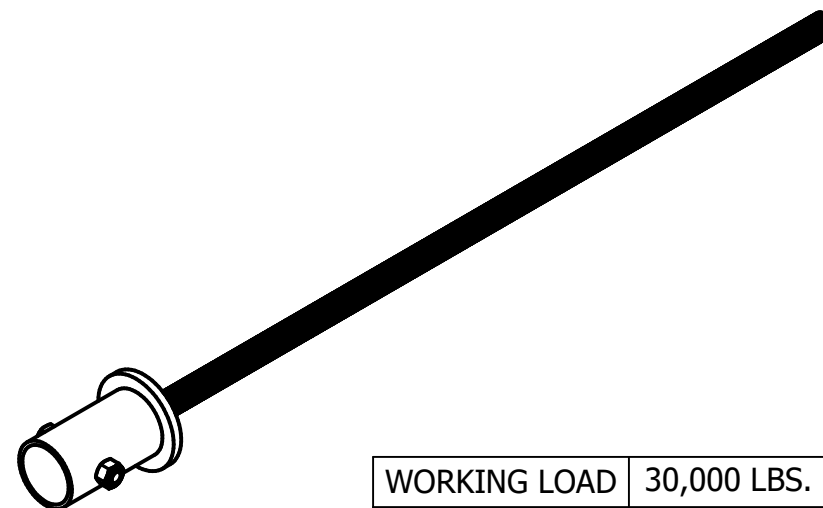
# TAT-288 - 2-7/8" LIGHT WALL TUBE TRANSITION KIT



**NOTES:**

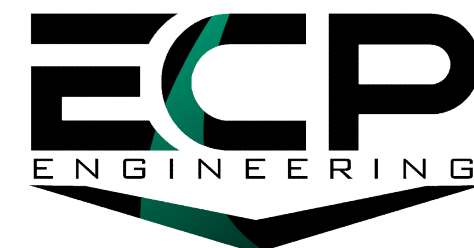
1. HOT DIP GALVANIZE PER ASTM A123 (LATEST REV.)
2. THREADED PIECES HOT DIP GALVANIZED PER ASTM A153 (LATEST REV.)
3. BRACKET MATERIAL 1/2" THICK HOT ROLLED STEEL PER ASTM A572 MIN. YIELD STRENGTH 50 KSI
4. ALL WELDING TO BE DONE BY WELDERS CERTIFIED UNDER SECTION 5 OF THE AWS CODE D1.1
5. MANUFACTURER TO HAVE IN EFFECT INDUSTRY RECOGNIZED WRITTEN QUALITY CONTROL FOR ALL MATERIALS AND MANUFACTURING PROCESSES
6. COMPATIBLE WITH 2-7/8" LIGHT WALL HELICAL TIEBACKS

ITEM	PART NUMBER	DESCRIPTION	QTY
1	TAT-288L-SP1	3" SCH40 PIPE x 6" LONG	1
2	TAT-288L-SP2	WF-8 HEX NUT W/ CAP PLATE	1
3	HAT-WF-08	WILLIAMS FORM ROD x 48" LG	1
4	HB8-075-425-HG	GR. 8 3/4"Ø BOLT x 4-1/2" LG	1
5	HN5-075-HG	3/4" HEAVY HEX NUT	1



WORKING LOAD	30,000 LBS.
ULTIMATE LOAD	60,000 LBS.

DRAWN GDR	DATE 3/25/2025
DWG NO. SD-TAT-288L	
DESCRIPTION 288 LIGHT WALL TRANSITION KIT	
NOT TO SCALE ALL UNITS IN INCHES U.N.O.	



SIZE B  
15612 S KEELER TERRACE  
OLATHE, KS 66062  
(913) 393-0007 | www.GETECP.com

REV 0

CONFIDENTIAL. THIS DRAWING AND ITS CONTENTS ARE CONFIDENTIAL AND THE EXCLUSIVE PROPERTY OF EARTH CONTACT PRODUCTS, LLC. NO PUBLICATION, DISTRIBUTION, OR COPIES MAY BE MADE WITHOUT THE WRITTEN CONSENT OF ECP. ALL RIGHTS RESERVED UNDER COPYRIGHT LAW.