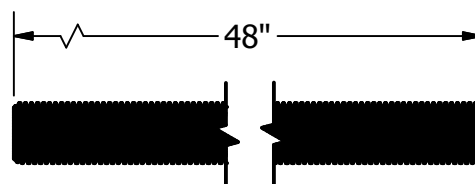
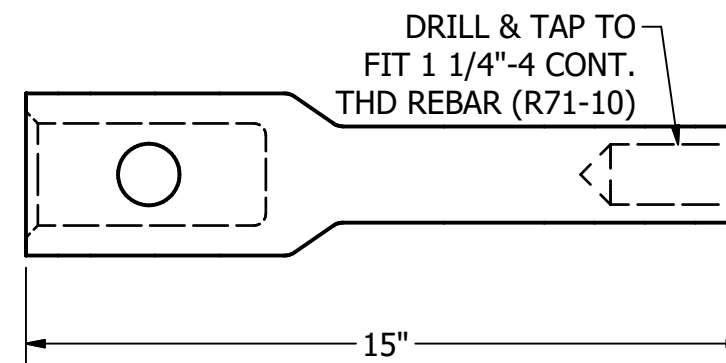
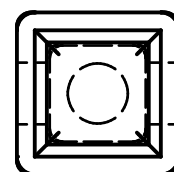
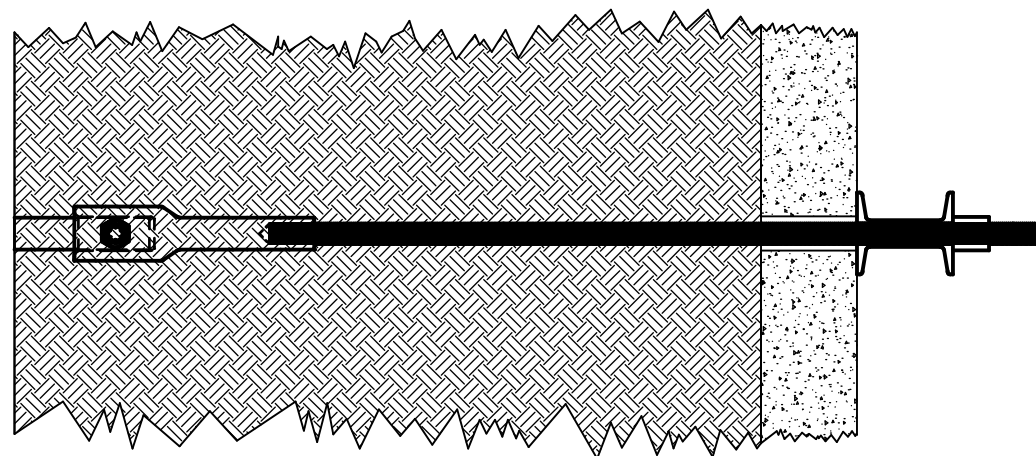
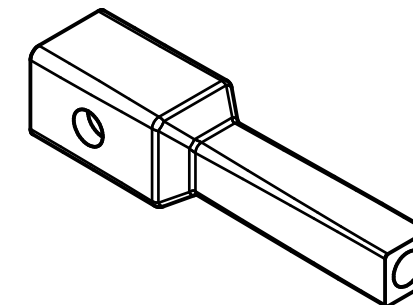


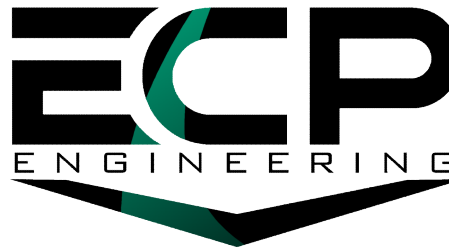
TAT-200 - 2" ROUND CORNER SQUARE BAR TRANSITION KIT



NOTES:

1. HOT DIP GALVANIZE PER ASTM A123 (LATEST REV.)
2. THREADED PIECES HOT DIP GALVANIZED PER ASTM A153 (LATEST REV.)
3. ALL WELDING TO BE DONE BY WELDERS CERTIFIED UNDER SECTION 5 OF THE AWS CODE D1.1
4. MANUFACTURER TO HAVE IN EFFECT INDUSTRY RECOGNIZED WRITTEN QUALITY CONTROL FOR ALL MATERIALS AND MANUFACTURING PROCESSES
5. COMPATIBLE WITH 2" RCS BAR HELICAL TIEBACKS

DRAWN GDR	DATE 3/19/2025
DWG NO. SD-TAT-200	
DESCRIPTION 2" RCSB TRANSITION KIT	
NOT TO SCALE ALL UNITS IN INCHES U.N.O.	



15612 S KEELER TERRACE
OLATHE, KS 66062
(913) 393-0007 | www.GETECP.com

CONFIDENTIAL. THIS DRAWING AND ITS CONTENTS ARE CONFIDENTIAL AND THE EXCLUSIVE PROPERTY OF EARTH CONTACT PRODUCTS, LLC. NO PUBLICATION, DISTRIBUTION, OR COPIES MAY BE MADE WITHOUT THE WRITTEN CONSENT OF ECP. ALL RIGHTS RESERVED UNDER COPYRIGHT LAW.

ITEM	PART NUMBER	DESCRIPTION	QTY
1	TAT-200-THD	2" RCSB x 15" TRANSITION	1
2	R73-10	HEX NUT FOR R71-10 ROD	1
3	R71-10	WILLIAMS FORM ROD x 48" LG	1
4	HB8-113-450-HG	GR. 8 1-1/8"Ø BOLT x 4.5" LG	1
5	HN5-113-HG	1-1/8" HEAVY HEX NUT	1

WORKING LOAD	77,500 LBS.
ULTIMATE LOAD	155,000 LBS.