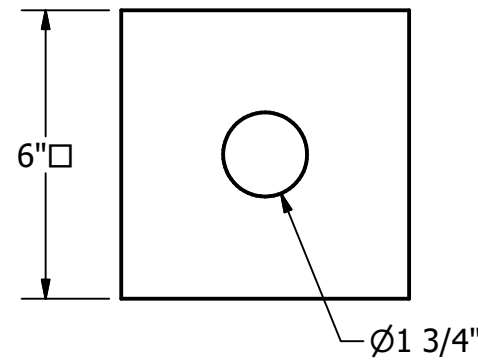
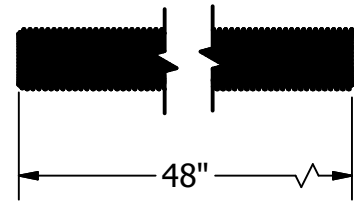
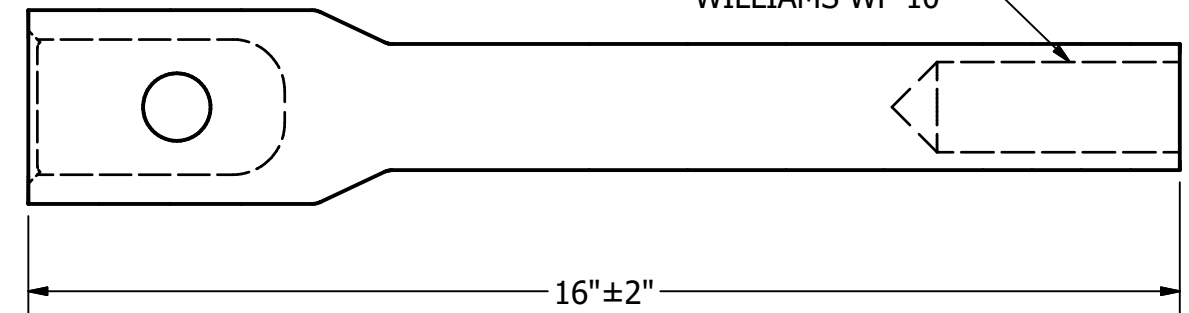
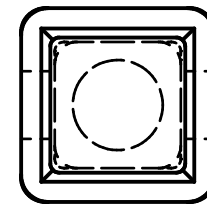
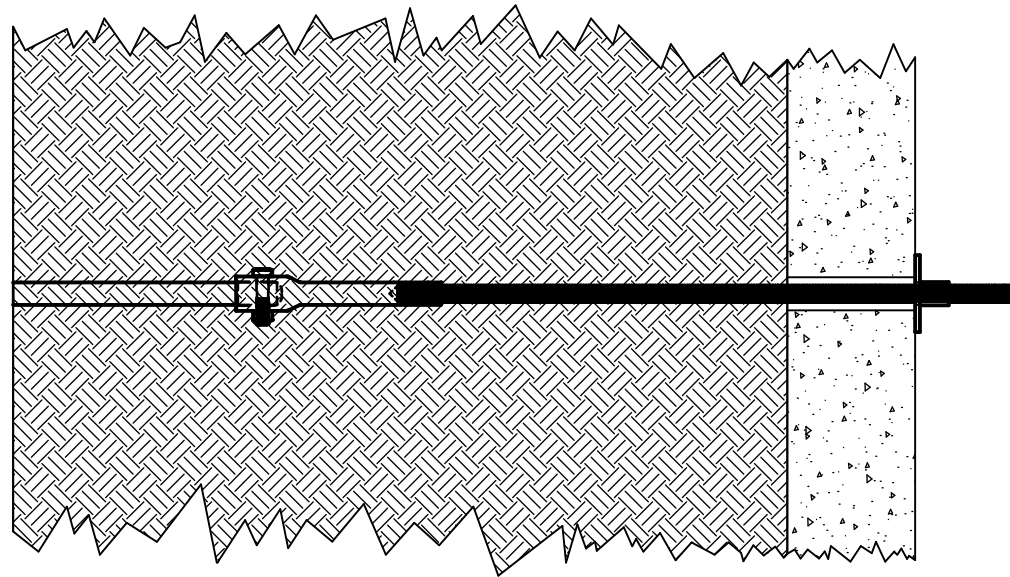
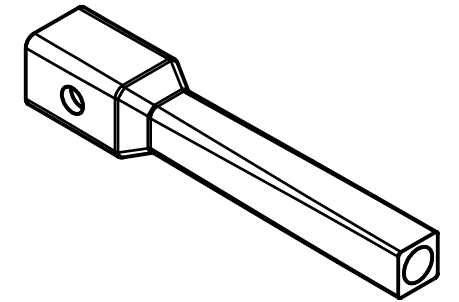
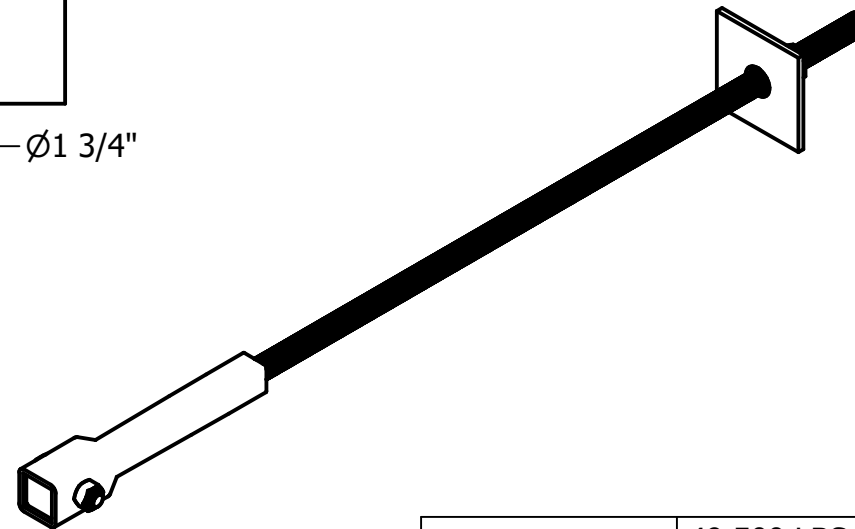


# TAT-175-HD - HEAVY DUTY 1-3/4" TRANSITION KIT



**NOTES:**

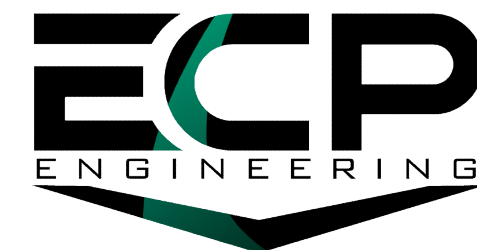
1. HOT DIP GALVANIZE PER ASTM A123 (LATEST REV.)
2. THREADED PIECES HOT DIP GALVANIZED PER ASTM A153 (LATEST REV.)
3. BRACKET MATERIAL 3/8" THICK HOT ROLLED STEEL PER ASTM A572 MIN. YIELD STRENGTH 50 KSI.
4. ALL WELDING TO BE DONE BY WELDERS CERTIFIED UNDER SECTION 5 OF THE AWS CODE D1.1
5. MANUFACTURER TO HAVE IN EFFECT INDUSTRY RECOGNIZED WRITTEN QUALITY CONTROL FOR ALL MATERIALS AND MANUFACTURING PROCESSES
6. COMPATIBLE WITH 1-3/4" RCS BAR HELICAL TIEBACKS



WORKING LOAD	49,500 LBS.
ULTIMATE LOAD	99,000 LBS.

ITEM	PART NUMBER	DESCRIPTION	QTY
1	TAT-175-THD	1-3/4" RCSB TRANSITION	1
2	PAW-66	6" x 6" x 3/8" HRP WASHER	1
3	HN-WF-10	HEX NUT FOR WF-10 ROD	1
4	HAT-WF-10	WILLIAMS FORM-10 x 48" ROD	1
5	HB8-088-375-HG	GRADE 8 BOLT 7/8"Ø x 3-3/4" HHCS	1
6	HN5-088-HG	7/8"Ø HEAVY HEX NUT	1

DRAWN	DATE
GDR	3/11/2025
DWG NO.	
SD-TAT-175-HD	
DESCRIPTION	
HEAVY DUTY 175 TRANSITION KIT	
NOT TO SCALE ALL UNITS IN INCHES U.N.O.	



SIZE B 15612 S KEELER TERRACE  
OLATHE, KS 66062  
(913) 393-0007 | www.GETECP.com

CONFIDENTIAL. THIS DRAWING AND ITS CONTENTS ARE CONFIDENTIAL AND THE EXCLUSIVE PROPERTY OF EARTH CONTACT PRODUCTS, LLC. NO PUBLICATION, DISTRIBUTION, OR COPIES MAY BE MADE WITHOUT THE WRITTEN CONSENT OF ECP. ALL RIGHTS RESERVED UNDER COPYRIGHT LAW.

REV 0 SHEET 1 OF 1