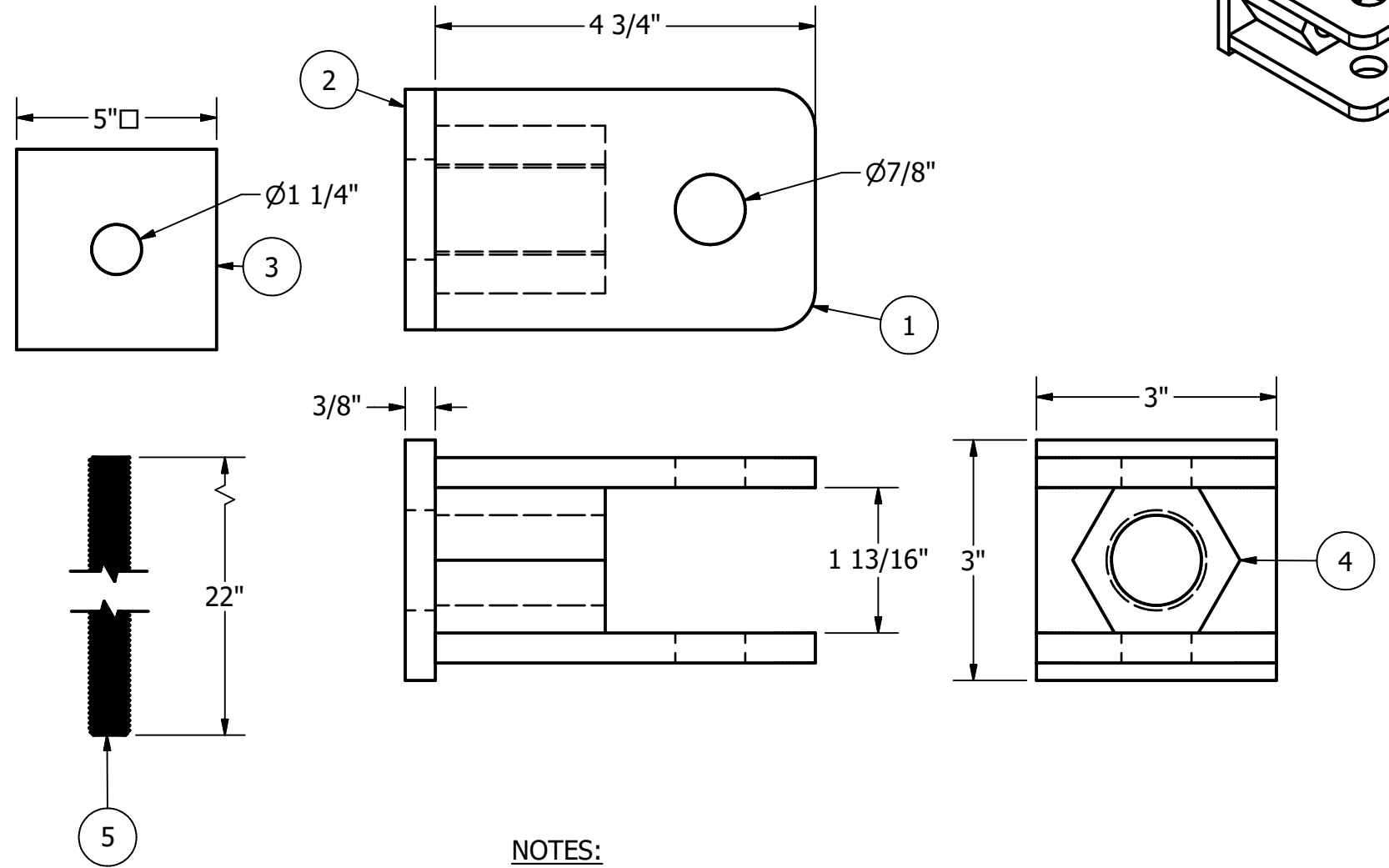
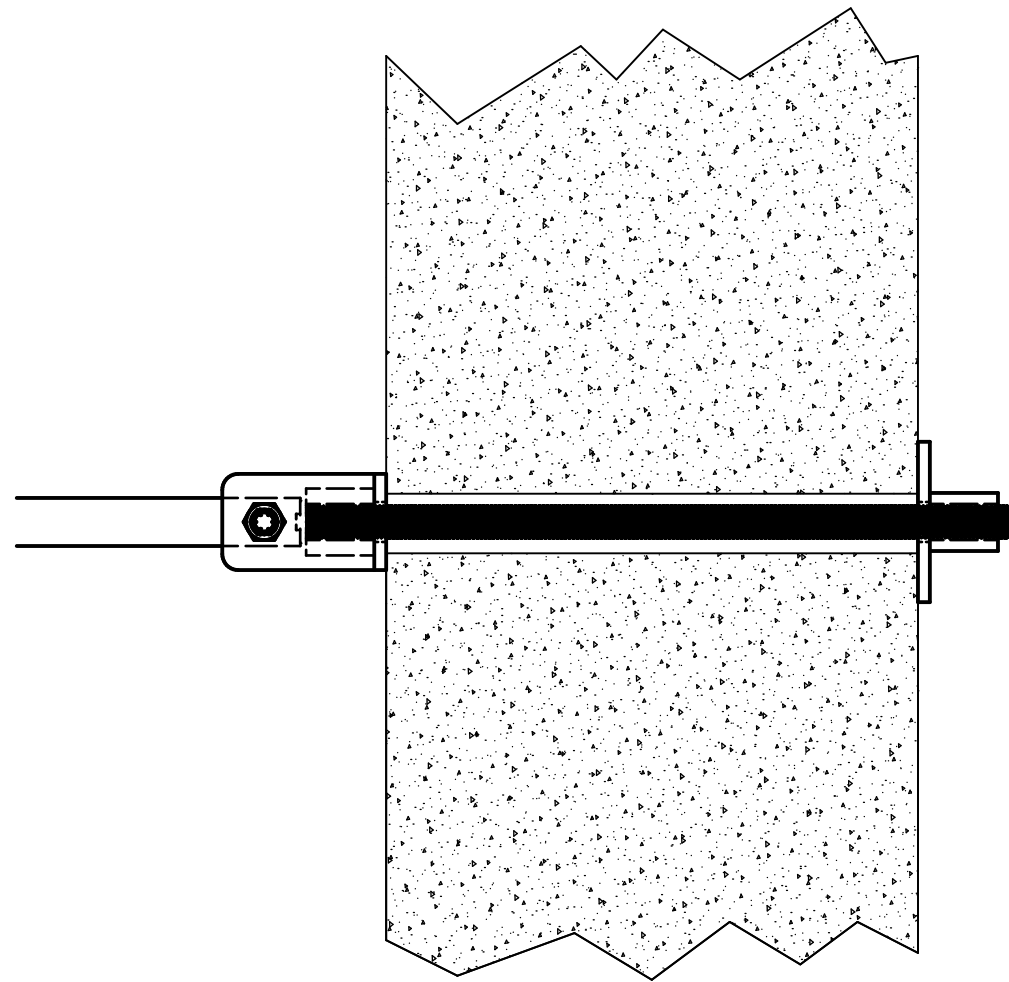
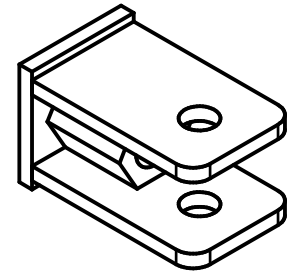


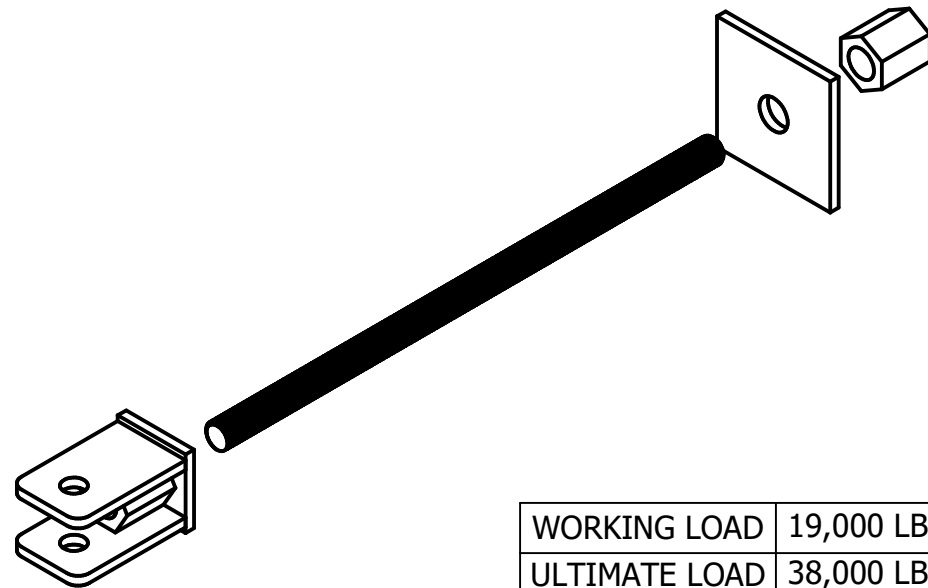
TAT-150 - 1-1/2" TRANSITION KIT



NOTES:

1. ZINC ELECTROPLATED FINISH PER B633 (LATEST REV.)
2. BRACKET MATERIAL 3/8" THICK HOT ROLLED STEEL PER ASTM A572 MIN. YIELD STRENGTH 50 KSI.
3. ALL WELDING TO BE DONE BY WELDERS CERTIFIED UNDER SECTION 5 OF THE AWS CODE D1.1
4. MANUFACTURER TO HAVE IN EFFECT INDUSTRY RECOGNIZED WRITTEN QUALITY CONTROL FOR ALL MATERIALS AND MANUFACTURING PROCESSES
5. COMPATIBLE WITH 1-1/2" RCS BAR HELICAL TIEBACKS

ITEM	PART NUMBER	DESCRIPTION	QTY
1	TAT-150-1	3" x 4-3/4" x 3/8" HRFB	2
2	TAT-150-2	3" x 3" x 3/8" HRP	1
3	PAW-55	5" x 5" x 3/8" HRP	1
4	HCN-100	100SCCNOP-1" COIL NUT	2
5	HAT-100-22	100ACTRP12-1"Ø COIL ROD	1



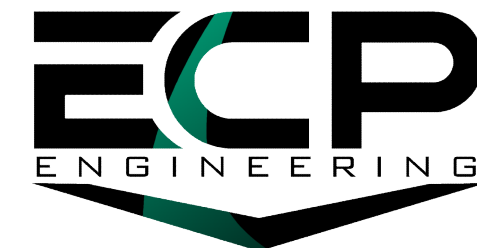
WORKING LOAD	19,000 LBS.
ULTIMATE LOAD	38,000 LBS.

DRAWN GDR DATE 3/7/2025

DWG NO. SD-TAT-150

DESCRIPTION 150 TRANSITION KIT

NOT TO SCALE ALL UNITS IN INCHES U.N.O.



SIZE B 15612 S KEELER TERRACE OLATHE, KS 66062 (913) 393-0007 | www.GETECP.com

REV 0

CONFIDENTIAL. THIS DRAWING AND ITS CONTENTS ARE CONFIDENTIAL AND THE EXCLUSIVE PROPERTY OF EARTH CONTACT PRODUCTS, LLC. NO PUBLICATION, DISTRIBUTION, OR COPIES MAY BE MADE WITHOUT THE WRITTEN CONSENT OF ECP. ALL RIGHTS RESERVED UNDER COPYRIGHT LAW.

SHEET 1 OF 1