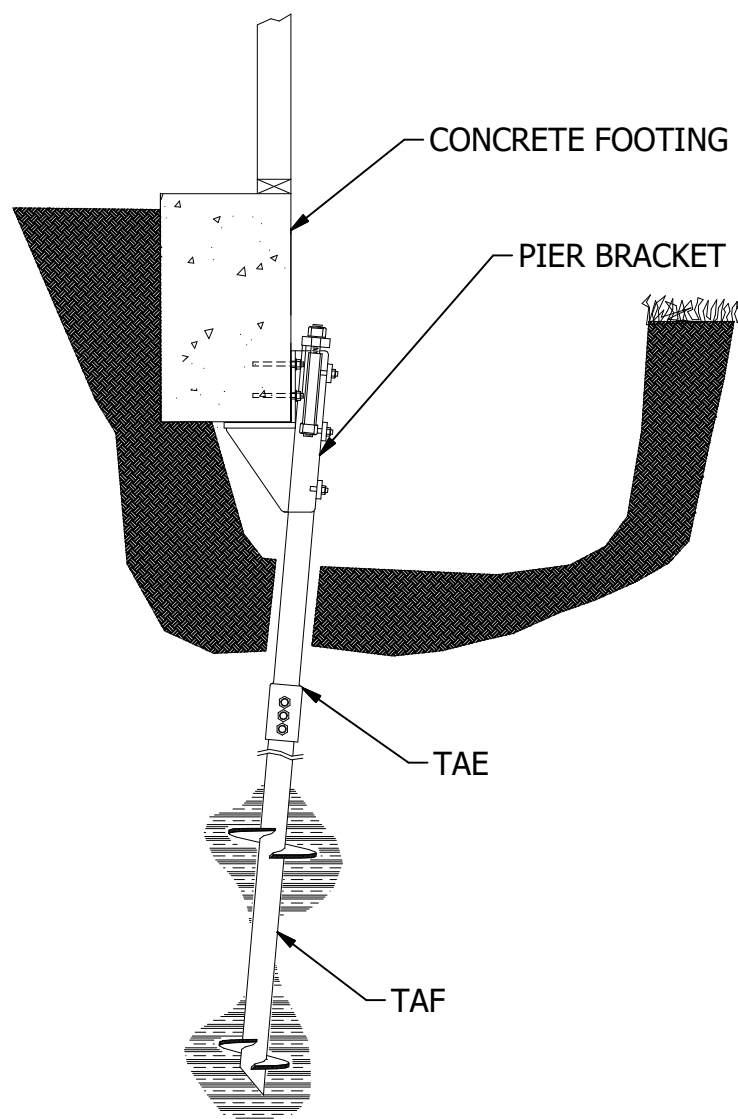
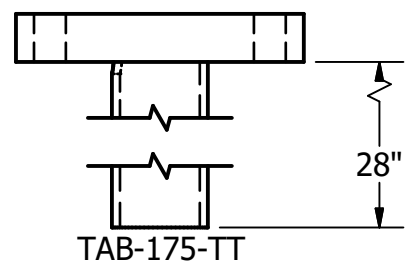
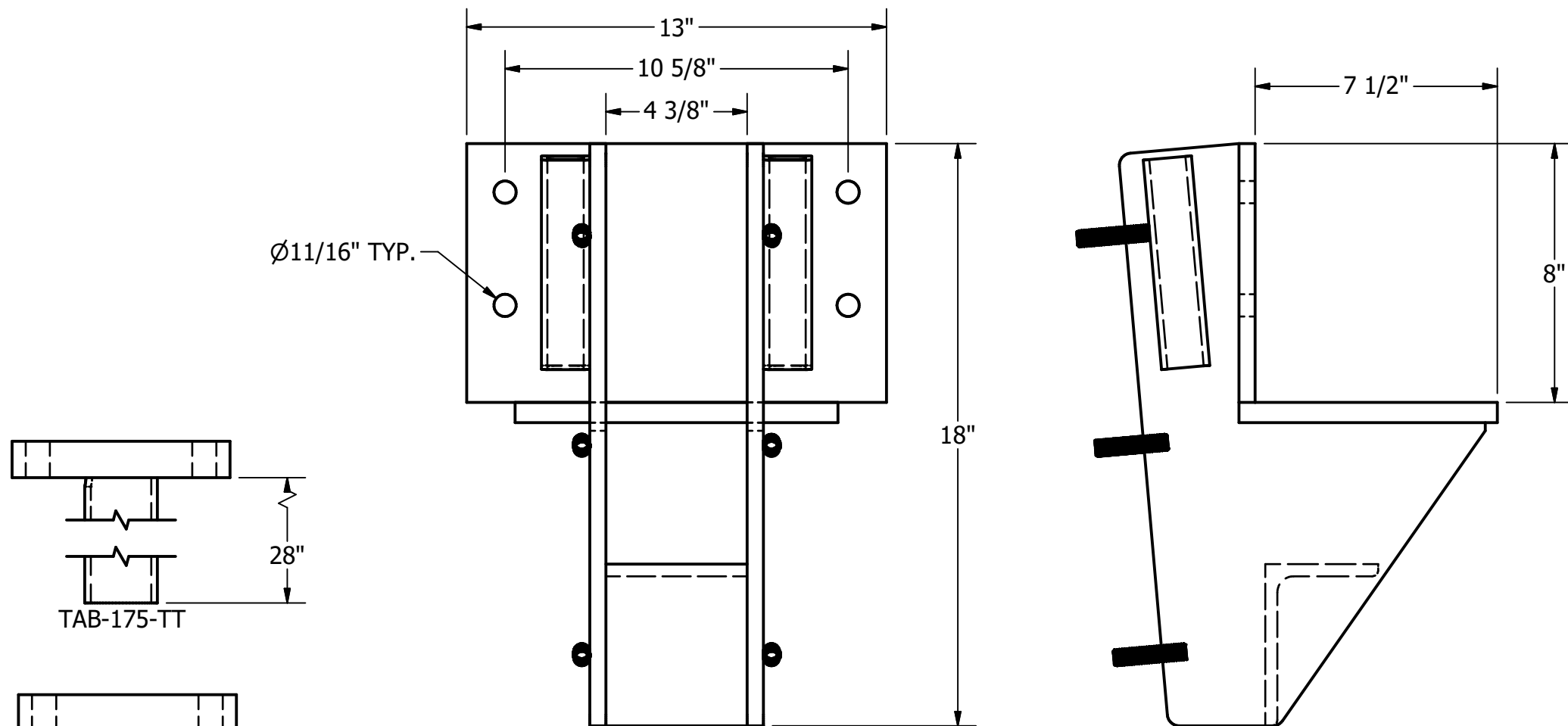


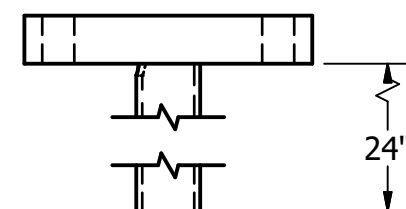
# TAB-LUB - STANDARD UTILITY BRACKET



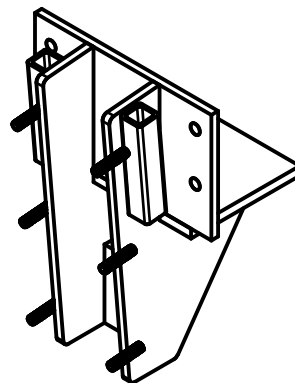
STANDARD INSTALLATION



TAB-175-TT



TAB-288-TT



WORKING LOAD	49,000 LBS.
ULTIMATE LOAD	98,000 LBS.
BEARING AREA	75 SQ. IN
LIFT CAPACITY	5-1/2 IN

**NOTES:**

- HOT DIP GALVANIZE PER ASTM A123 GRADE 100 (LATEST REV.)
- BRACKET MATERIAL 3/8" THICK HOT ROLLED STEEL PER ASTM A572 MIN. YIELD STRENGTH 50 KSI.
- ALL WELDING TO BE DONE BY WELDERS CERTIFIED UNDER SECTION 5 OF THE AWS CODE D1.1
- MANUFACTURER TO HAVE IN EFFECT INDUSTRY RECOGNIZED WRITTEN QUALITY CONTROL FOR ALL MATERIALS AND MANUFACTURING PROCESSES
- COMPATIBLE WITH TA-175, TA-288, & TA-350 PRODUCT LINES
- ICC-ESR-3559

ITEM	PART NO.	DESCRIPTION	QTY.
1	TAB-LUB-1	BACK PLATE	1
2	TAB-LUB-2	SIDE PLATE	2
3	TAB-LUB-3	SEAT PLATE	1
4	TAB-LUB-4	SIDE ALIGNMENT TUBE	2
5	TAB-LUB-5	ANGLE SUPPORT A36 ANGLE	1
6	TAB-LUB-6	ALIGNMENT PLATE ASSEMBLY	1
7	TAB-LUB-6B	FACE PLATE	2
8	HB5-050-225-B	1/2"-13 x 2-1/4" STUD	6
9	HN5-050-H2	1/2"-13 HEX NUT	6
10	TAB-175-TT	1-3/4 T-TUBE CAP	(1)
11	TAB-288-TT	2-7/8 T-TUBE CAP	(1)

DRAWN GDR	DATE 12/5/2024
DWG NO. SD-TAB-LUB	
DESCRIPTION LARGE UTILITY BRACKET	
NOT TO SCALE ALL UNITS IN INCHES U.N.O.	

15612 S KEELER TERRACE  
OLATHE, KS 66062  
(913) 393-0007 | www.GETECP.com

CONFIDENTIAL. THIS DRAWING AND ITS CONTENTS ARE CONFIDENTIAL AND THE EXCLUSIVE PROPERTY OF EARTH CONTACT PRODUCTS, LLC. NO PUBLICATION, DISTRIBUTION, OR COPIES MAY BE MADE WITHOUT THE WRITTEN CONSENT OF ECP. ALL RIGHTS RESERVED UNDER COPYRIGHT LAW.

REV 0

SHEET 1 OF 1