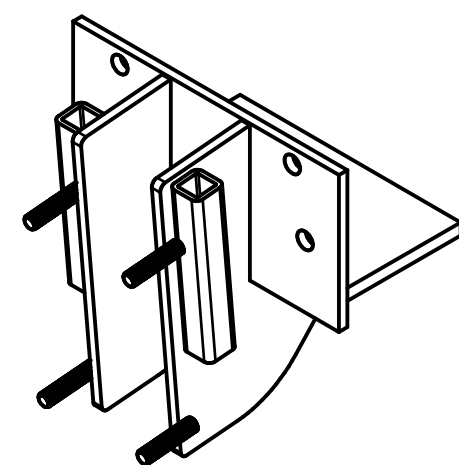
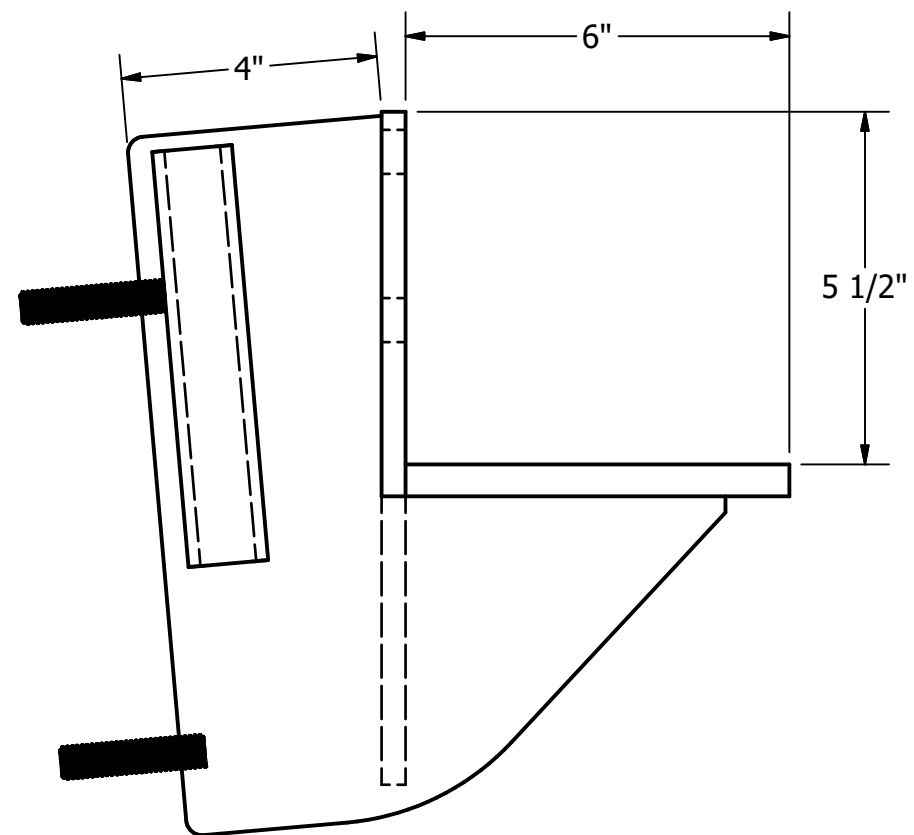
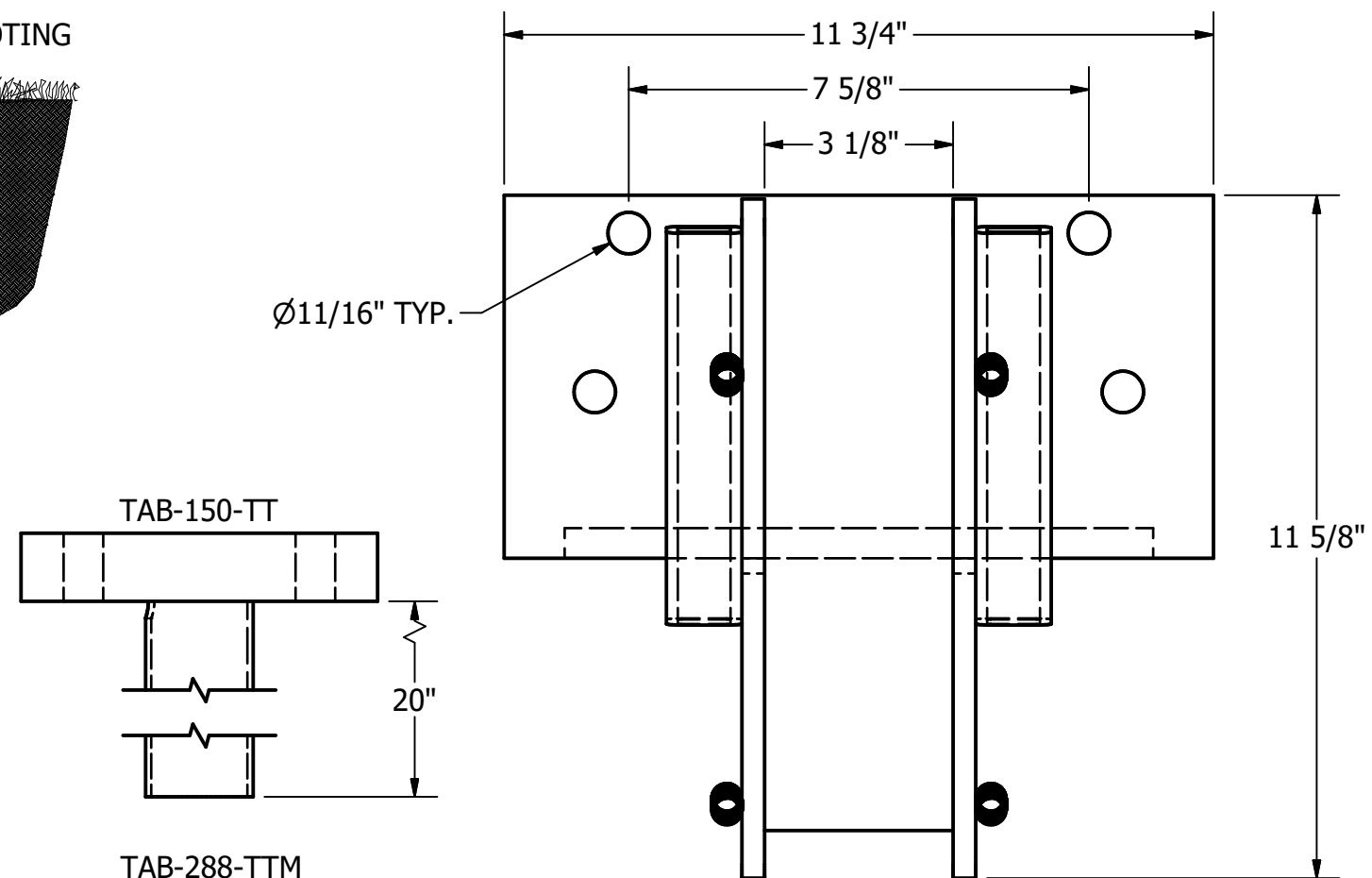
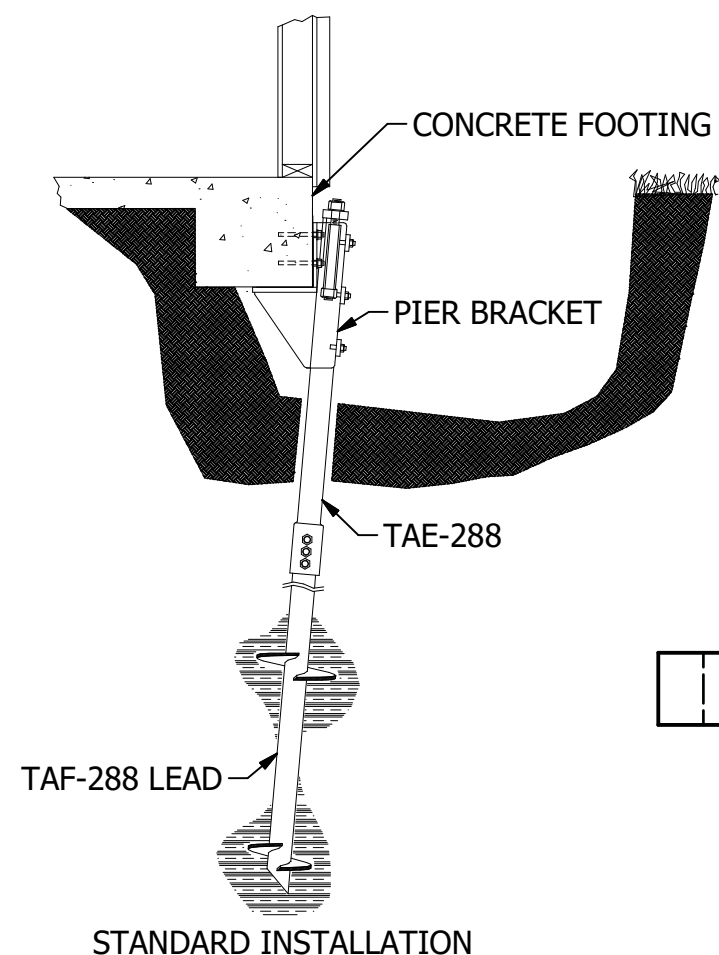


TAB-288-MUB - STANDARD UTILITY BRACKET

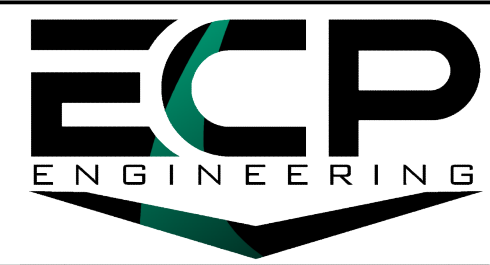


- NOTES:**
1. HOT DIP GALVANIZE PER ASTM A123 GRADE 100 (LATEST REV.)
 2. BRACKET MATERIAL 3/8" THICK HOT ROLLED STEEL PER ASTM A572 MIN. YIELD STRENGTH 50 KSI.
 3. ALL WELDING TO BE DONE BY WELDERS CERTIFIED UNDER SECTION 5 OF THE AWS CODE D1.1
 4. MANUFACTURER TO HAVE IN EFFECT INDUSTRY RECOGNIZED WRITTEN QUALITY CONTROL FOR ALL MATERIALS AND MANUFACTURING PROCESSES
 5. ICC-ESR-3559

ITEM	PART NO.	DESCRIPTION	QTY
1	TAB-28-MUB-1	BACK PLATE	1
2	TAB-28-MUB-2	SIDE PLATE	2
3	TAB-28-MUB-3	SEAT PLATE	1
4	TAB-150-4	SIDE ALIGNMENT TUBE	2
5	HB5-050-225-B	1/2"-13 x 2-1/4" STUD	4
6	HN5-050-H2	1/2"-13 HEX NUT	4
7	PPB-300-5	FACE PLATE	2
8	TAB-288-TTM	T-TUBE CAP	1

WORKING LOAD	20,000 LBS.
ULTIMATE LOAD	40,000 LBS.
BEARING AREA	68-1/4 SQ. IN
LIFT CAPACITY	4 IN

DRAWN GDR	DATE 11/27/2024
DWG NO. SD-TAB-288-MUB	
DESCRIPTION STANDARD UTILITY BRACKET, 5-DEG	
NOT TO SCALE ALL UNITS IN INCHES U.N.O.	



SIZE B 15612 S KEELER TERRACE
OLATHE, KS 66062
(913) 393-0007 | www.GETECP.com

CONFIDENTIAL. THIS DRAWING AND ITS CONTENTS ARE CONFIDENTIAL AND THE EXCLUSIVE PROPERTY OF EARTH CONTACT PRODUCTS, LLC. NO PUBLICATION, DISTRIBUTION, OR COPIES MAY BE MADE WITHOUT THE WRITTEN CONSENT OF ECP. ALL RIGHTS RESERVED UNDER COPYRIGHT LAW.

REV 0 SHEET 1 OF 1