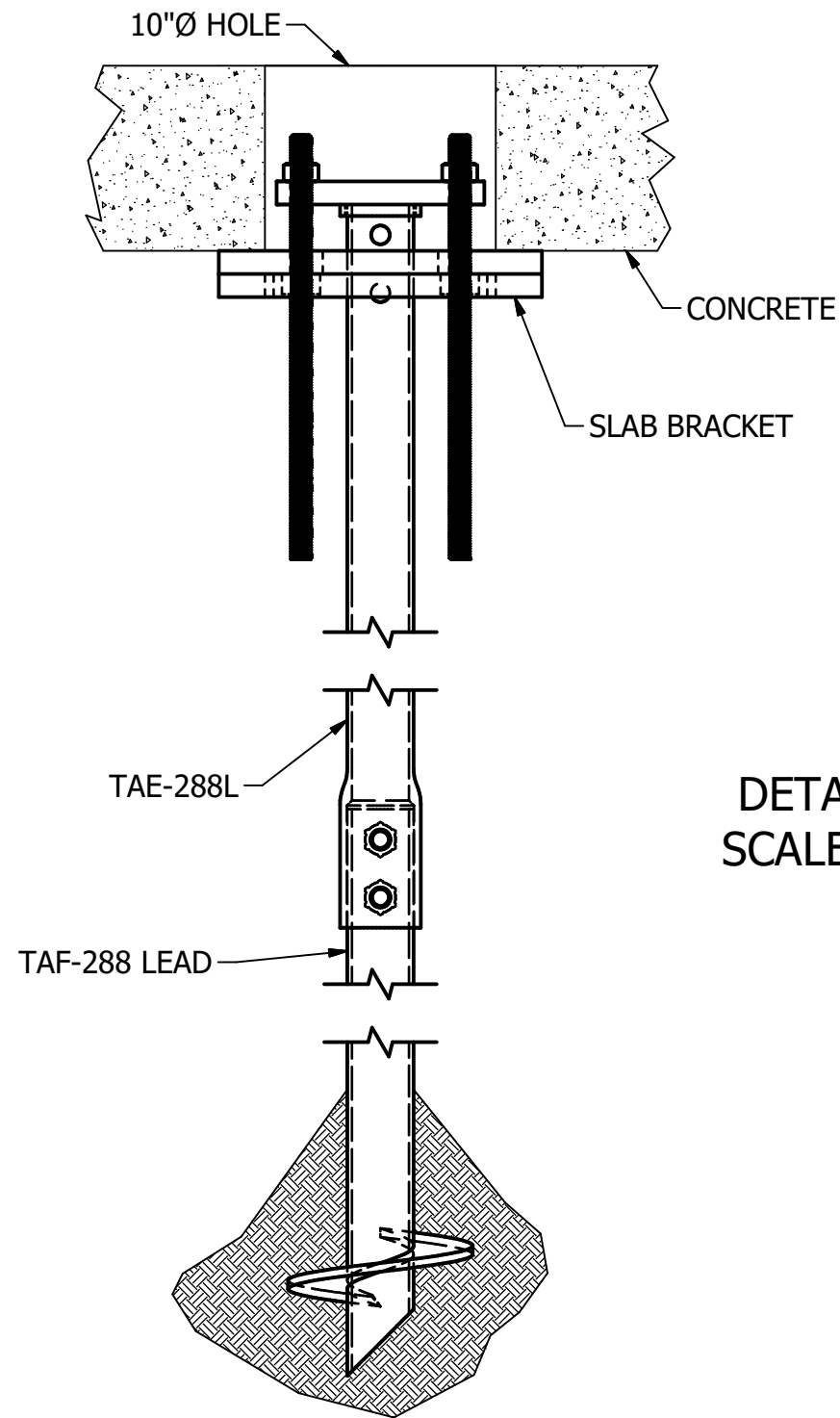
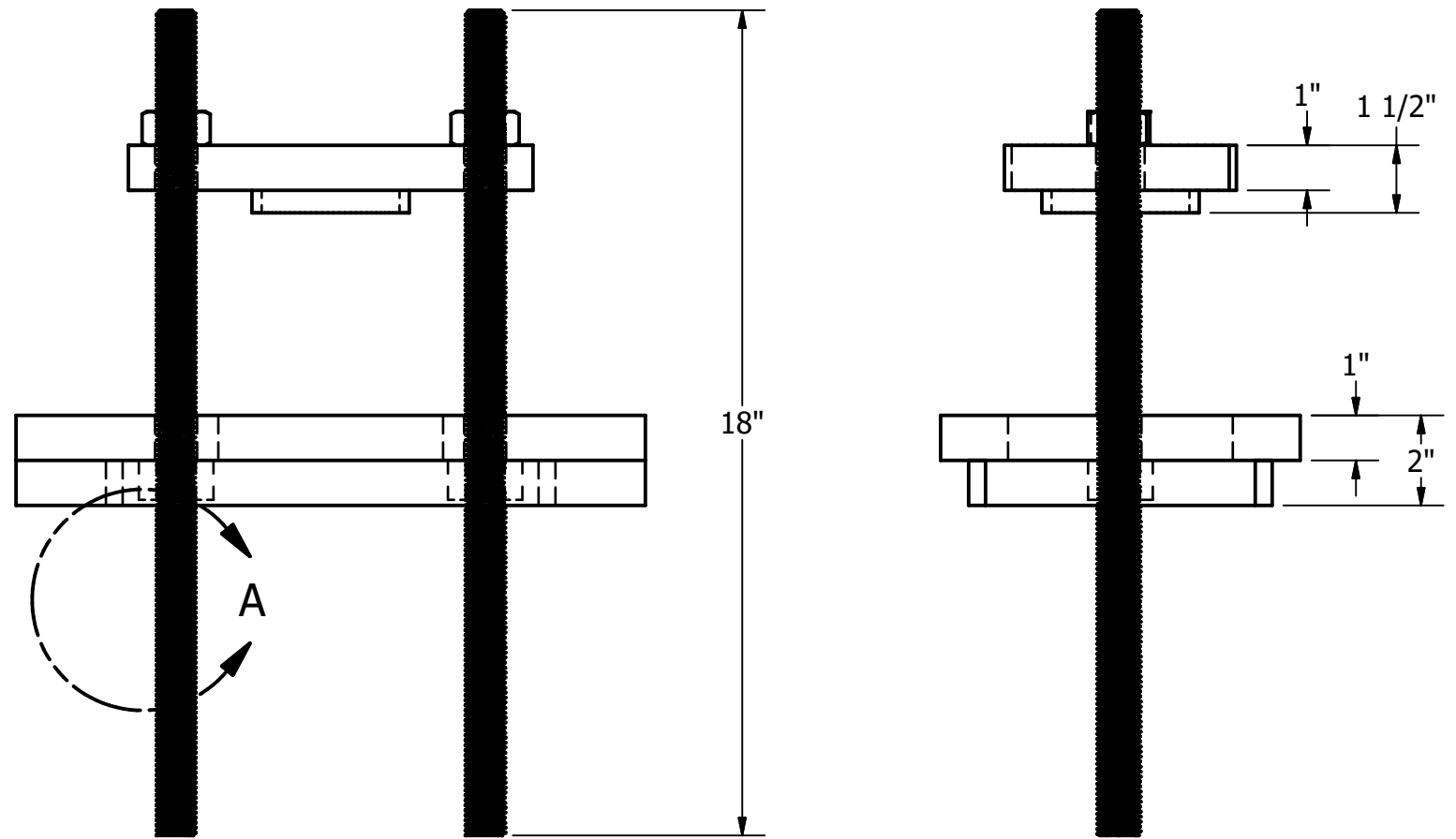


TAB-288-HSB - HYDRAULIC LIFT SLAB BRACKET



DETAIL A
SCALE 1 / 2



NOTES:

1. BARE STEEL, OPTIONAL HOT DIP GALVANIZE PER ASTM A123 (LATEST REV.)
2. BRACKET MATERIAL 1" THICK HOT ROLLED STEEL PER ASTM A572 MIN. YIELD STRENGTH 50 KSI.
3. ALL WELDING TO BE DONE BY WELDERS CERTIFIED UNDER SECTION 5 OF THE AWS CODE D1.1
4. MANUFACTURER TO HAVE IN EFFECT INDUSTRY RECOGNIZED WRITTEN QUALITY CONTROL FOR ALL MATERIALS AND MANUFACTURING PROCESSES
5. COMPATIBLE WITH TA-150, TA-175, TA-288L, & TA-288 HELICAL PILES, AS WELL AS 2-7/8" PUSH PIER PIPE

ITEM	PART NO.	DESCRIPTION	QTY.
1	TAB-2HS-LP1	LOWER SUPPORT PLATE	1
2	TAB-2HS-TC1	CAP PLATE	1
3	HATZ-088-018-CNZ	7/8-9 GRADE B7 ALL THREAD ROD x 18"	2
4	HATZ-088-018-CNZ	7/8-9 GRADE 5 HEX NUT	2

WORKING LOAD	20,000 LBS.
ULTIMATE LOAD	40,000 LBS.
LIFT CAPACITY	4 IN

DRAWN GDR	DATE 12/12/2024
DWG NO. SD-TAB-288-HSB	
DESCRIPTION HYDRAULIC LIFT SLAB BRACKET	
NOT TO SCALE ALL UNITS IN INCHES U.N.O.	

ECP
ENGINEERING

SIZE B

15612 S KEELER TERRACE
OLATHE, KS 66062
(913) 393-0007 | www.GETECP.com

REV 0

CONFIDENTIAL. THIS DRAWING AND ITS CONTENTS ARE CONFIDENTIAL AND THE EXCLUSIVE PROPERTY OF EARTH CONTACT PRODUCTS, LLC. NO PUBLICATION, DISTRIBUTION, OR COPIES MAY BE MADE WITHOUT THE WRITTEN CONSENT OF ECP. ALL RIGHTS RESERVED UNDER COPYRIGHT LAW.

SHEET 1 OF 1