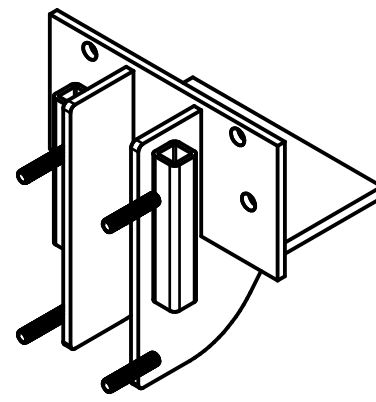
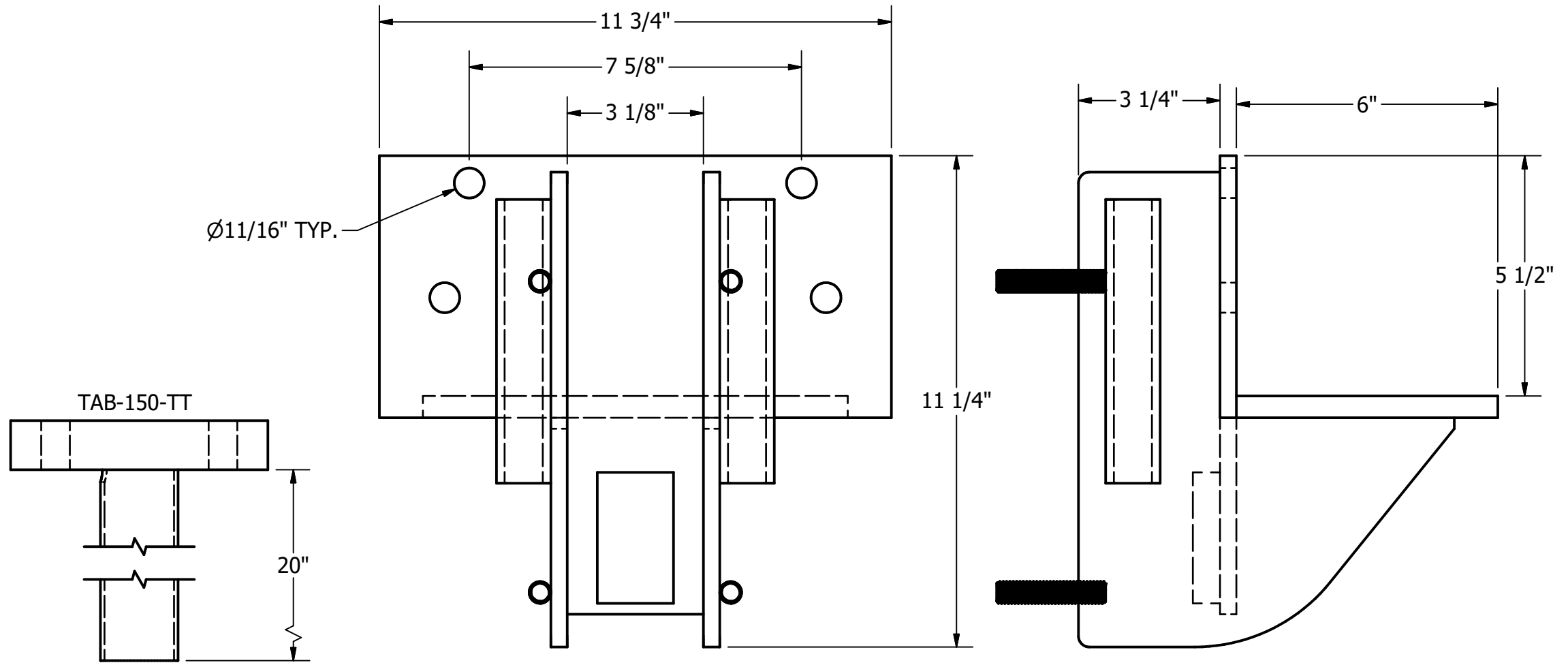
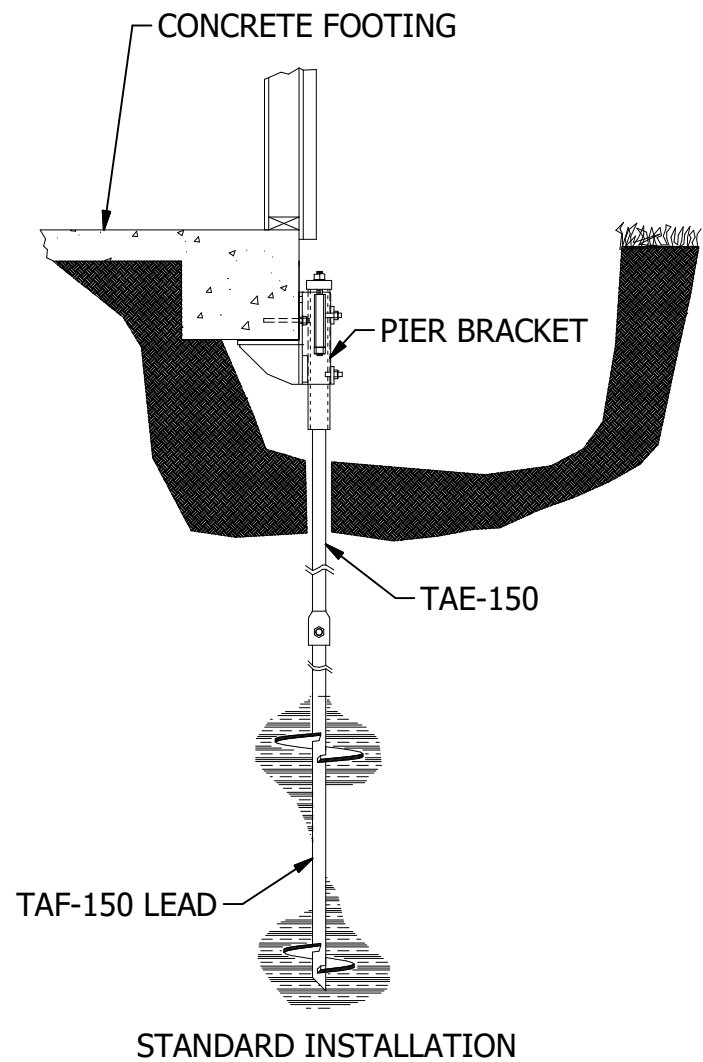


TAB-150-SUB - STANDARD UTILITY BRACKET



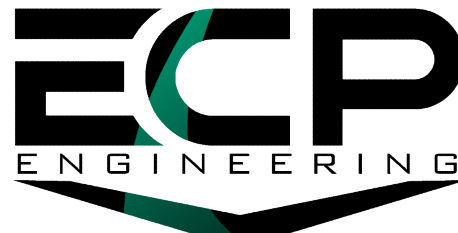
NOTES:

1. HOT DIP GALVANIZE PER ASTM A123 GRADE 100 (LATEST REV.)
2. BRACKET MATERIAL 3/8" THICK HOT ROLLED STEEL PER ASTM A572 MIN. YIELD STRENGTH 50 KSI.
3. ALL WELDING TO BE DONE BY WELDERS CERTIFIED UNDER SECTION 5 OF THE AWS CODE D1.1
4. MANUFACTURER TO HAVE IN EFFECT INDUSTRY RECOGNIZED WRITTEN QUALITY CONTROL FOR ALL MATERIALS AND MANUFACTURING PROCESSES

ITEM	PART NO.	DESCRIPTION	QTY
1	TAB-150-1	BACK PLATE	1
2	TAB-150-2	SIDE PLATE	2
3	TAB-150-3	SEAT PLATE	1
4	TAB-150-4	SIDE ALIGNMENT TUBE	2
5	PPB-300-9	FACE PLATE MOUNTING STUD	4
6	TAB-150-TT	BRACKET T-CAP	1
7	HAT7-075-018-CNZ	3/4-10 GRADE B7 ALL THREAD x 18"	2
8	HAT7-075-018-CNZ	3/4-10 PLATED HEX NUT	4
9	HN5-050-HZ	1/2-13 PLATED HEX NUT	4
10	TAB-150-10	TAB-150-10	1
11	PPB-300-5	PPB-300-5	2

WORKING LOAD	20,000 LBS.
ULTIMATE LOAD	40,000 LBS.
BEARING AREA	68-1/4 SQ. IN
LIFT CAPACITY	4 IN

DRAWN GDR	DATE 11/26/2024
DWG NO. SD-TAB-150-SUB	
DESCRIPTION STANDARD UTILITY BRACKET	
NOT TO SCALE ALL UNITS IN INCHES U.N.O.	



ECP
ENGINEERING

SIZE B	15612 S KEELER TERRACE OLATHE, KS 66062 (913) 393-0007 www.GETECP.com	REV 0
-----------	---	----------

CONFIDENTIAL. THIS DRAWING AND ITS CONTENTS ARE CONFIDENTIAL AND THE EXCLUSIVE PROPERTY OF EARTH CONTACT PRODUCTS, LLC. NO PUBLICATION, DISTRIBUTION, OR COPIES MAY BE MADE WITHOUT THE WRITTEN CONSENT OF ECP. ALL RIGHTS RESERVED UNDER COPYRIGHT LAW.

SHEET 1 OF 1