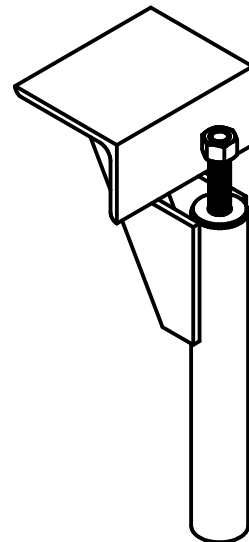
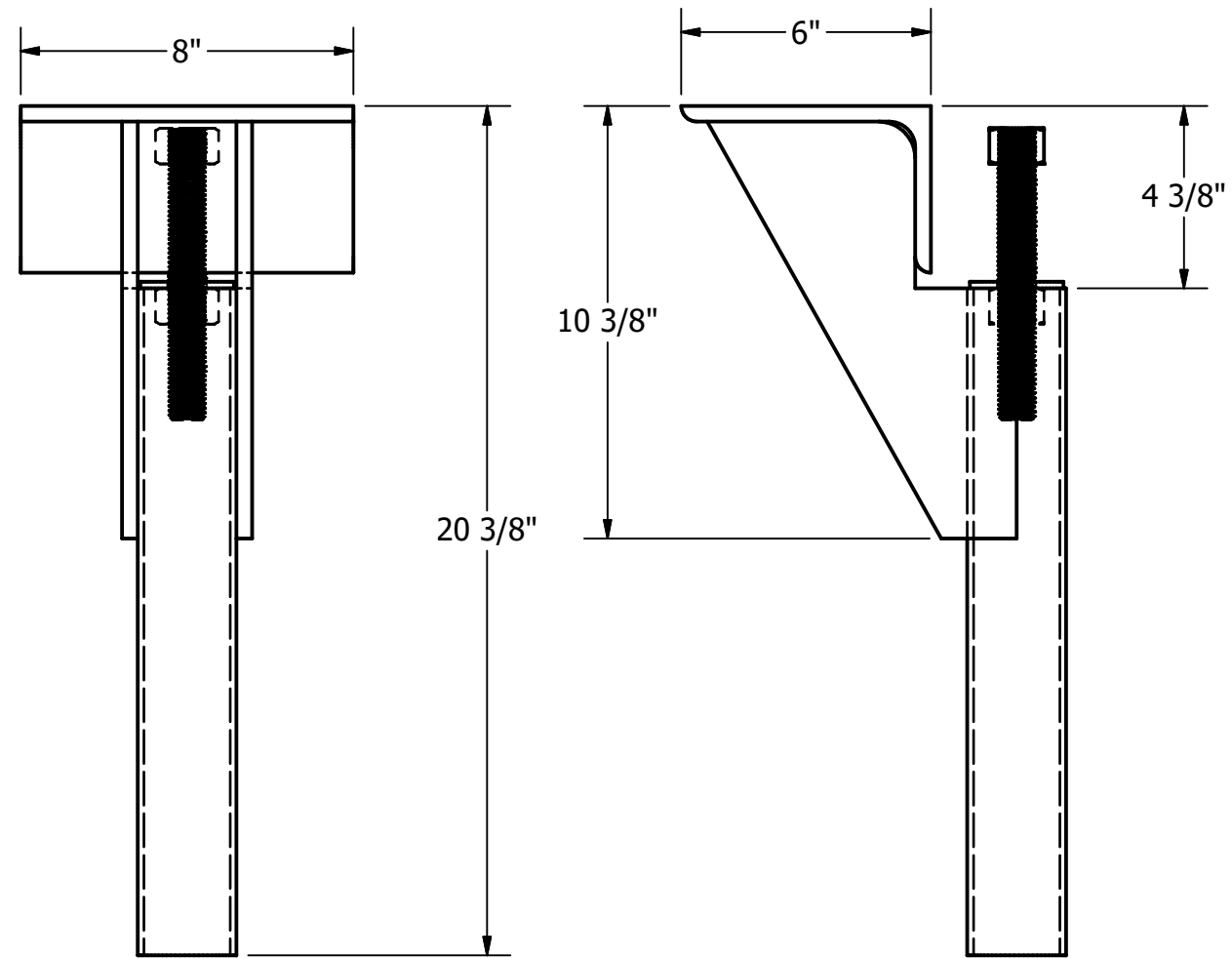
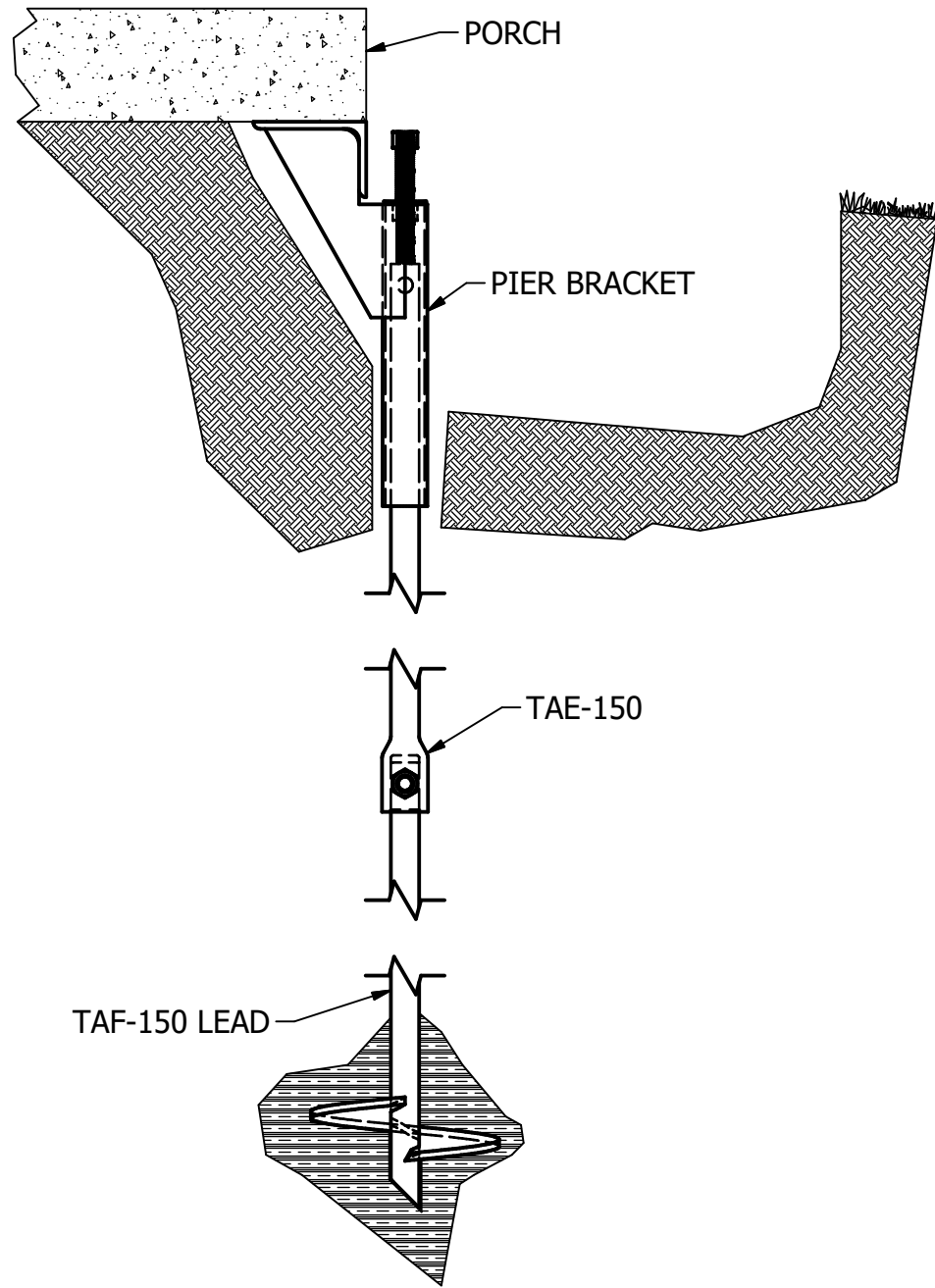


TAB-150-LP - PORCH BRACKET



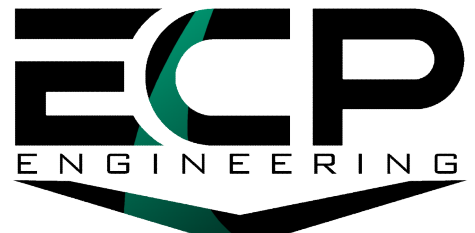
NOTES:

1. PAINT BLACK
2. BRACKET MATERIAL 3/8" THICK HOT ROLLED STEEL PER ASTM A572 MIN. YIELD STRENGTH 50 KSI.
3. ALL WELDING TO BE DONE BY WELDERS CERTIFIED UNDER SECTION 5 OF THE AWS CODE D1.1
4. MANUFACTURER TO HAVE IN EFFECT INDUSTRY RECOGNIZED WRITTEN QUALITY CONTROL FOR ALL MATERIALS AND MANUFACTURING PROCESSES

ITEM	PART NO.	DESCRIPTION	QTY.
1	PBL-038-001	SIDE PLATE	2
2	PBL-078-005	THREADED ROD & HEX NUT	1
3	PBL-038-003	6 x 4 x 3/8 ANGLE IRON	1
4	PBL-019-004	3/16 HRPL w/ 7/8" HEX NUT	1
5	PBL-025-006	2" SCH40 PIPE	1

WORKING LOAD	4,500 LBS.
ULTIMATE LOAD	9,000 LBS.
BEARING AREA	48 SQ. IN
LIFT CAPACITY	4-1/2 IN

DRAWN GDR	DATE 12/9/2024
DWG NO. SD-TAB-150-LP	
DESCRIPTION PORCH BRACKET 1-1/2" RCS BAR	
NOT TO SCALE ALL UNITS IN INCHES U.N.O.	



ECP
ENGINEERING

SIZE B	15612 S KEELER TERRACE OLATHE, KS 66062 (913) 393-0007 www.GETECP.com	REV 0
-----------	---	----------

CONFIDENTIAL. THIS DRAWING AND ITS CONTENTS ARE CONFIDENTIAL AND THE EXCLUSIVE PROPERTY OF EARTH CONTACT PRODUCTS, LLC. NO PUBLICATION, DISTRIBUTION, OR COPIES MAY BE MADE WITHOUT THE WRITTEN CONSENT OF ECP. ALL RIGHTS RESERVED UNDER COPYRIGHT LAW.

SHEET 1 OF 1