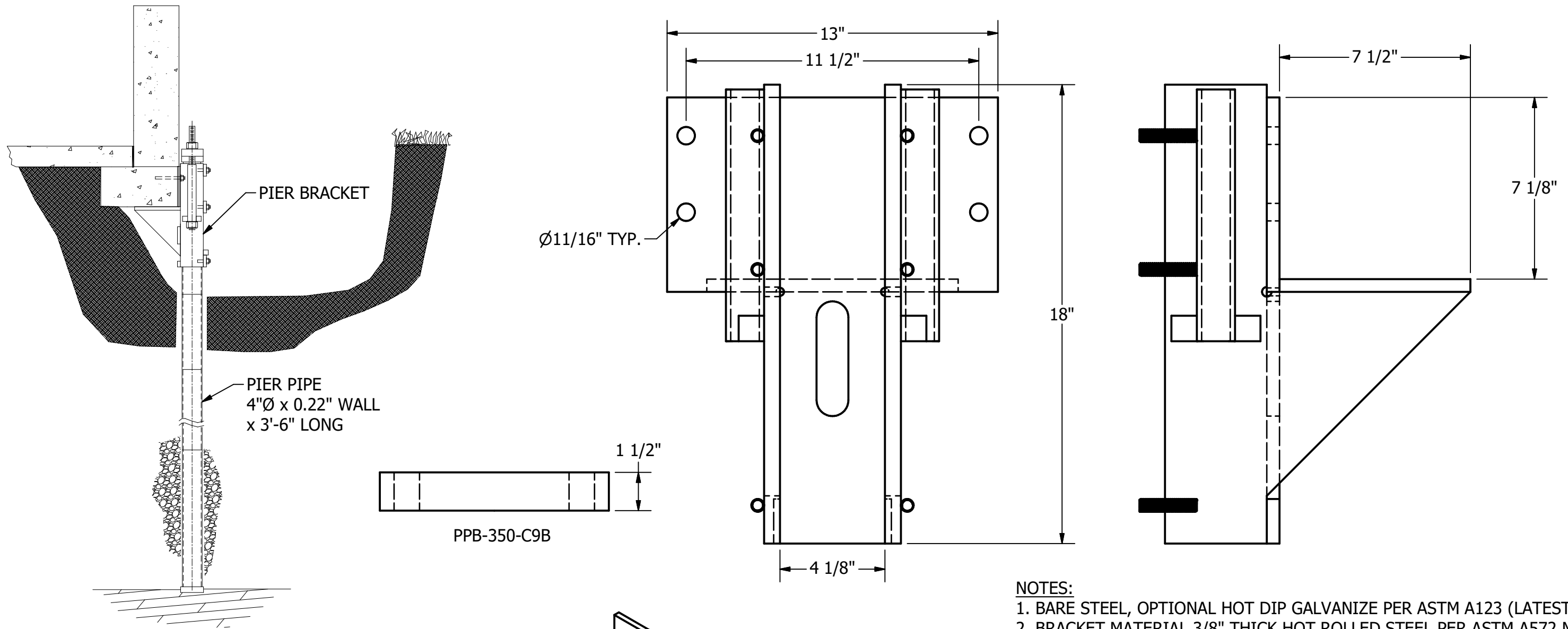
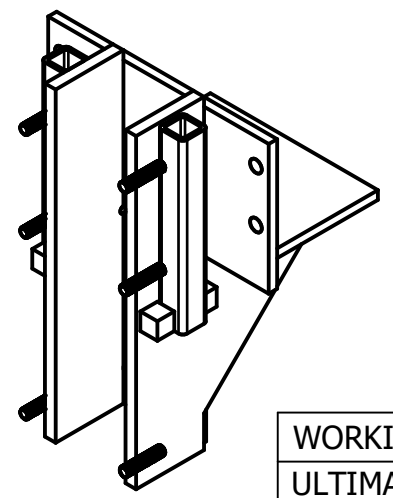


# PPB-400 - ECCENTRIC UNDERPINNING BRACKET

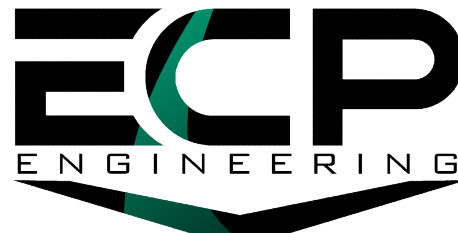


ITEM	PART NUMBER	DESCRIPTION	QTY
1	PPB-350-1	SIDE PLATE	2
2	PPB-350-2	SEAT PLATE	1
3	PPB-350-4	BACK PLATE	1
4	PPB-350-SB19	1x1x1 STEEL BLOCK	4
5	HB5-050-225-B	1/2-13 x 2 1/4" STUD	6
6	HAT7-088-018-CNZ	18" THREADED ROD W/ NUTS	2
7	PPB-350-1ST	ALIGNMENT SLEEVE	2
8	PPB-350-FP	FACE PLATE	3
9	PPB-350-C9B	TOP CAP	1



WORKING LOAD	49,500 LBS.
ULTIMATE LOAD	99,000 LBS.
BEARING AREA	74 SQ. IN
LIFT CAPACITY	4 IN

- NOTES:**
1. BARE STEEL, OPTIONAL HOT DIP GALVANIZE PER ASTM A123 (LATEST REV.)
  2. BRACKET MATERIAL 3/8" THICK HOT ROLLED STEEL PER ASTM A572 MIN. YIELD STRENGTH 50 KSI.
  3. ALL WELDING TO BE DONE BY WELDERS CERTIFIED UNDER SECTION 5 OF THE AWS CODE D1.1
  4. MANUFACTURER TO HAVE IN EFFECT INDUSTRY RECOGNIZED WRITTEN QUALITY CONTROL FOR ALL MATERIALS AND MANUFACTURING PROCESSES
  5. COMPATIBLE WITH 4" GALVANIZED PUSH PIER PIPE

DRAWN GDR	DATE 1/8/2025		CONFIDENTIAL. THIS DRAWING AND ITS CONTENTS ARE CONFIDENTIAL AND THE EXCLUSIVE PROPERTY OF EARTH CONTACT PRODUCTS, LLC. NO PUBLICATION, DISTRIBUTION, OR COPIES MAY BE MADE WITHOUT THE WRITTEN CONSENT OF ECP. ALL RIGHTS RESERVED UNDER COPYRIGHT LAW.
DWG NO. SD-PPB-400			
DESCRIPTION ECCENTRIC UNDERPINNING BRACKET			
NOT TO SCALE ALL UNITS IN INCHES U.N.O.	SIZE B	15612 S KEELER TERRACE OLATHE, KS 66062 (913) 393-0007   www.GETECP.com	REV 0