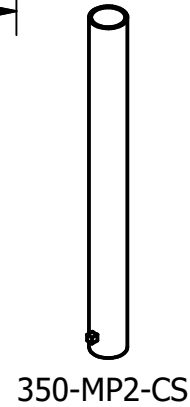
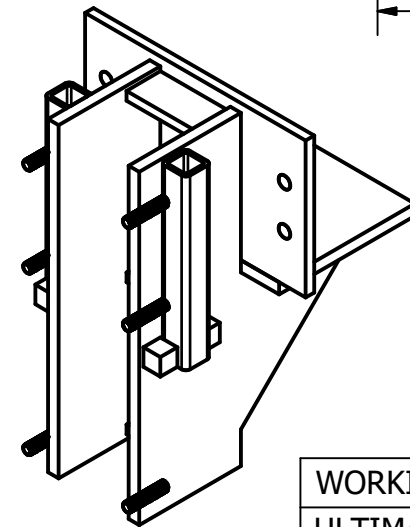
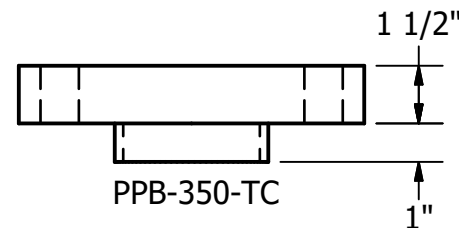
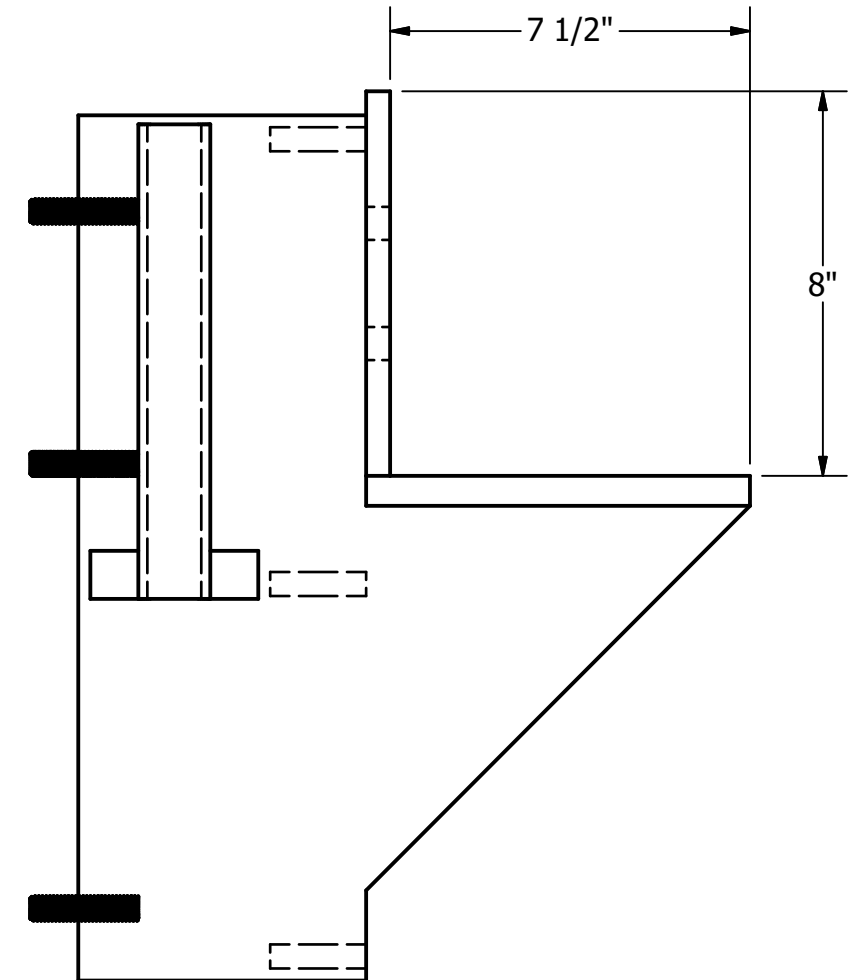
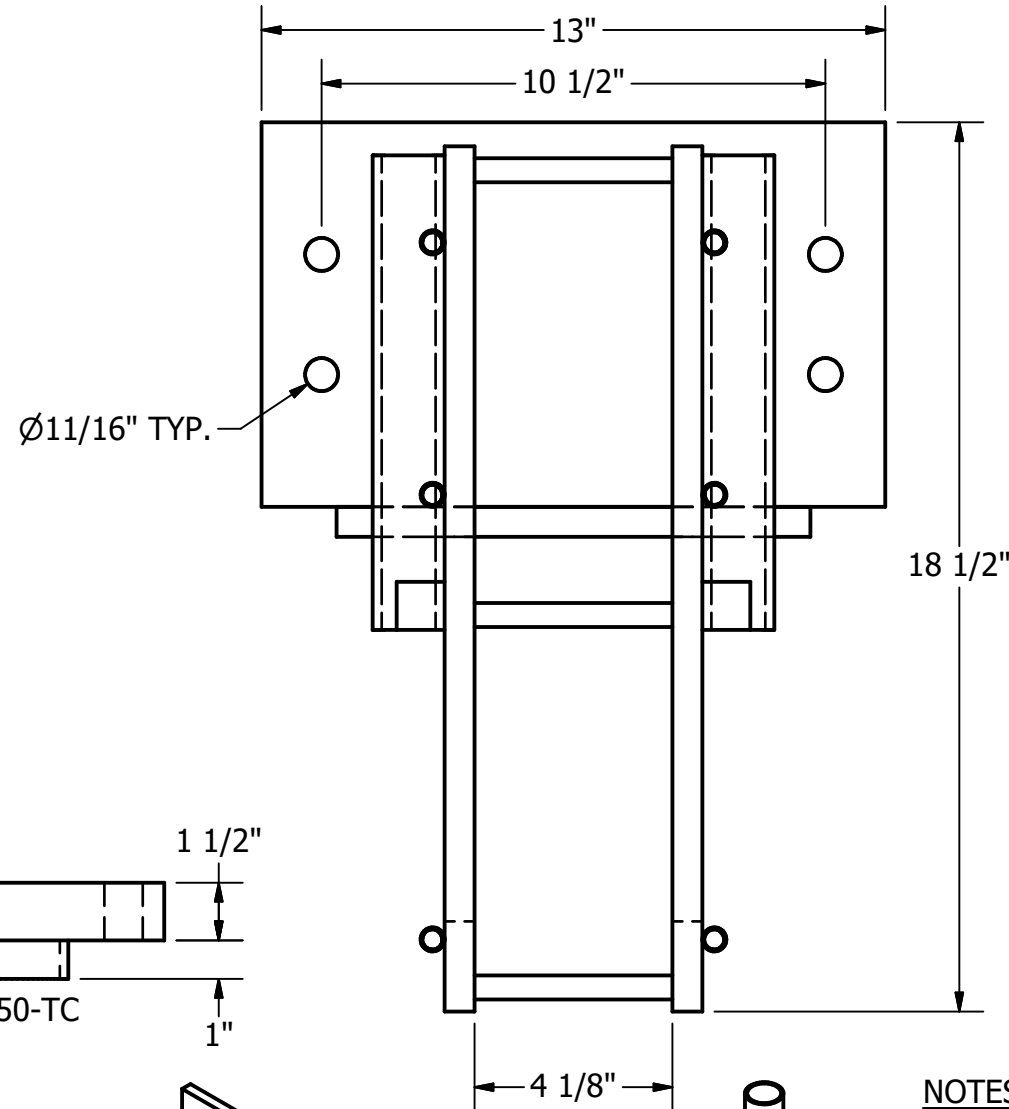
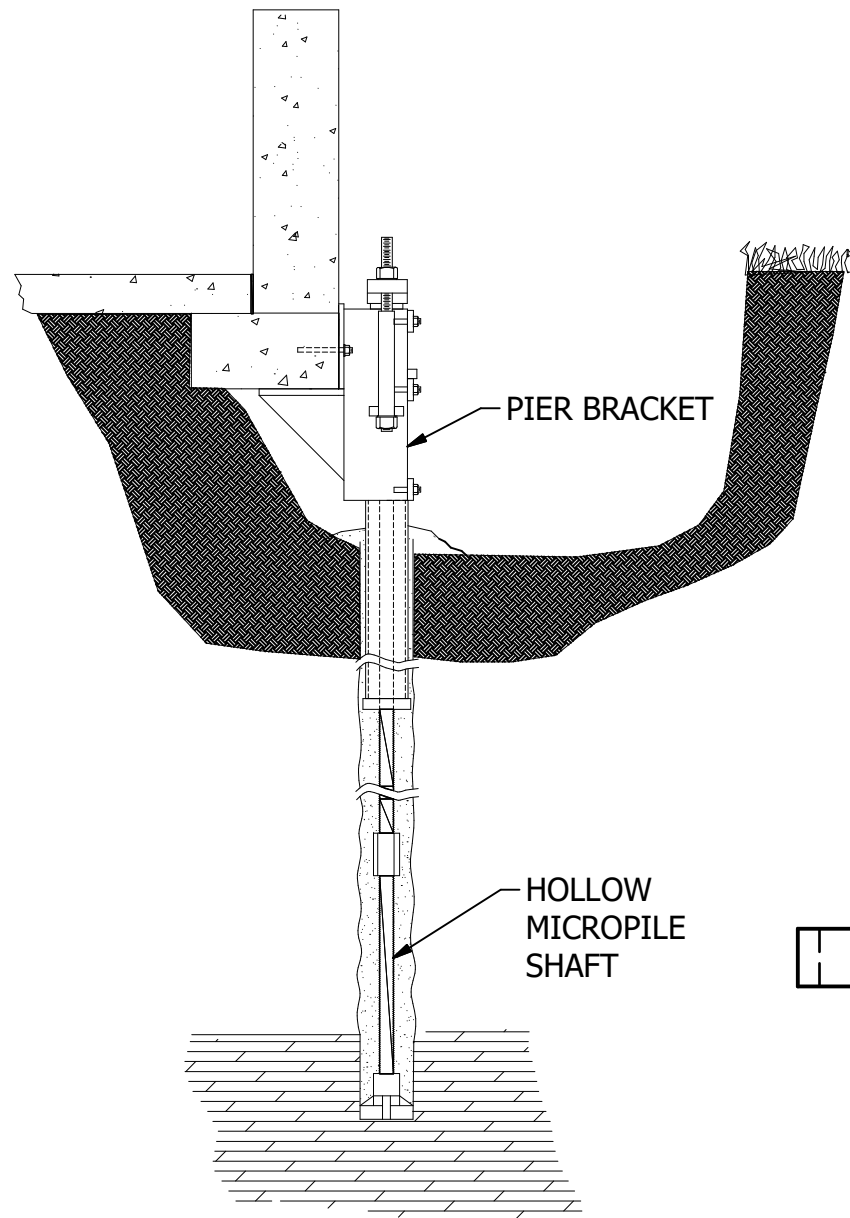


PPB-350-MP2 - ECCENTRIC UNDERPINNING MICROPILE BRACKET



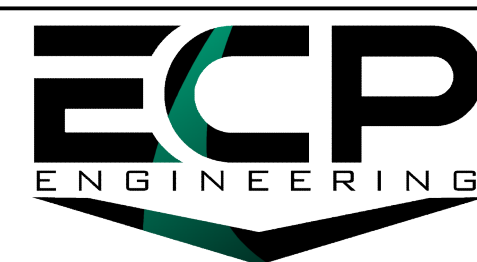
NOTES:

1. BARE STEEL, OPTIONAL HOT DIP GALVANIZE PER ASTM A123 (LATEST REV.)
2. BRACKET MATERIAL 1/2" & 5/8" THICK HOT ROLLED STEEL PER ASTM A572 MIN. YIELD STRENGTH 50 KSI.
3. ALL WELDING TO BE DONE BY WELDERS CERTIFIED UNDER SECTION 5 OF THE AWS CODE D1.1
4. MANUFACTURER TO HAVE IN EFFECT INDUSTRY RECOGNIZED WRITTEN QUALITY CONTROL FOR ALL MATERIALS AND MANUFACTURING PROCESSES

ITEM	PART NUMBER	DESCRIPTION	QTY
1	HRF-063-018	SIDE PLATE	2
2	HRF-063-010	SEAT PLATE	1
3	PPB-350-EP2-MTP	BACK PLATE	1
4	PPB-350-SB19	1x1x1 STEEL BLOCK	4
5	HB5-050-225-B	1/2-13 x 2 1/4" STUD	6
6	HAT7-088-018-CNZ	18" THREADED ROD W/ NUTS	2
7	PPB-350-1ST	ALIGNMENT SLEEVE	2
8	350-MP2-CS	CONTROL SLEEVE	1
9	PPB-350-FP	FACE PLATE	3
10	PPB-350-TC	TOP CAP	1
11	HRF-050-004	SPACING PLATE	3

WORKING LOAD	34,000 LBS.
ULTIMATE LOAD	68,000 LBS.
BEARING AREA	74 SQ. IN
LIFT CAPACITY	4 IN

DRAWN	DATE
GDR	2/6/2025
DWG NO.	
SD-PPB-350-MP2	
DESCRIPTION	
ECCENTRIC UNDERPINNING MICROPILE BRACKET	
NOT TO SCALE	
ALL UNITS IN INCHES U.N.O.	



SIZE B 15612 S KEELER TERRACE
OLATHE, KS 66062
(913) 393-0007 | www.GETECP.com

REV 0

CONFIDENTIAL. THIS DRAWING AND ITS CONTENTS ARE CONFIDENTIAL AND THE EXCLUSIVE PROPERTY OF EARTH CONTACT PRODUCTS, LLC. NO PUBLICATION, DISTRIBUTION, OR COPIES MAY BE MADE WITHOUT THE WRITTEN CONSENT OF ECP. ALL RIGHTS RESERVED UNDER COPYRIGHT LAW.

SHEET 1 OF 1