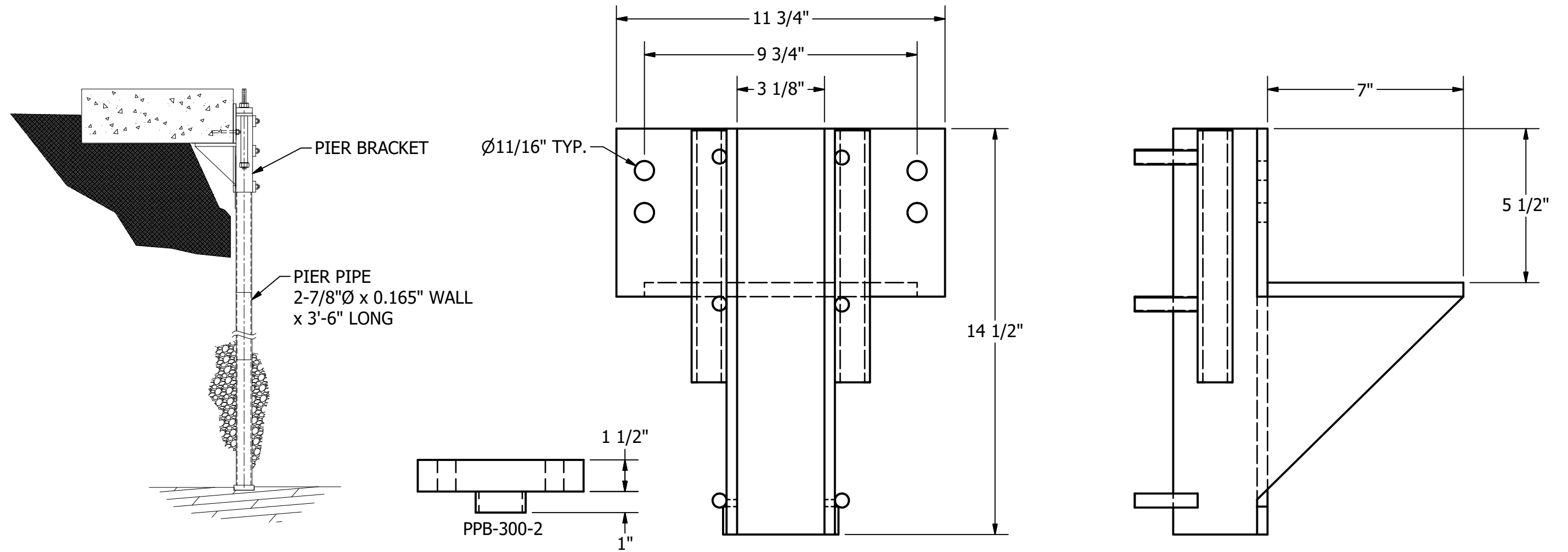


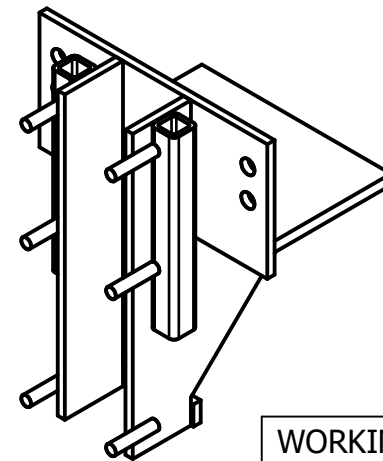
PPB-300 - ECCENTRIC UNDERPINNING BRACKET



NOTES:

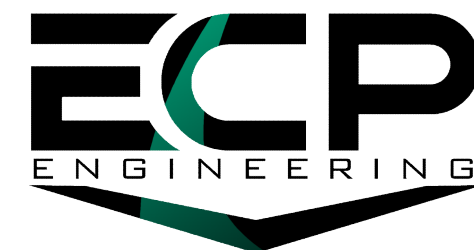
1. BARE STEEL, OPTIONAL HOT DIP GALVANIZE PER ASTM A123 (LATEST REV.)
2. BRACKET MATERIAL 3/8" THICK HOT ROLLED STEEL PER ASTM A572 MIN. YIELD STRENGTH 50 KSI.
3. ALL WELDING TO BE DONE BY WELDERS CERTIFIED UNDER SECTION 5 OF THE AWS CODE D1.1
4. MANUFACTURER TO HAVE IN EFFECT INDUSTRY RECOGNIZED WRITTEN QUALITY CONTROL FOR ALL MATERIALS AND MANUFACTURING PROCESSES
5. COMPATIBLE WITH 2-7/8" GALVANIZED PUSH PIER PIPE
6. ICC ESR-4471

ITEM	PART NO.	DESCRIPTION	QTY.
1	PPB-300-1	SEAT PLATE	1
2	PPB-300-1ST	SIDE ALIGNMENT TUBE	2
3	PPB-300-3	SIDE PLATE	2
4	PPB-300-4	BACK PLATE	1
5	PPB-300-9	MOUNTING STUD	6
6	PPB-300-5	FACE PLATE	1
7	PPB-300-2	PIER CAP	1
8	HATZ-075-018-CNZ	3/4"-10 x 18" ALL THREAD ROD	2
9	HATZ-075-018-CNZ	3/4"-10 HEX NUT	2
10	HN5-050-H2	1/2"-13 HEX NUT	6



WORKING LOAD	34,000 LBS.
ULTIMATE LOAD	68,000 LBS.
BEARING AREA	68 SQ. IN
LIFT CAPACITY	4 IN

DRAWN GDR	DATE 12/17/2024
DWG NO. SD-PPB-300	
DESCRIPTION ECCENTRIC UNDERPINNING BRACKET	
NOT TO SCALE ALL UNITS IN INCHES U.N.O.	



SIZE B
15612 S KEELER TERRACE
OLATHE, KS 66062
(913) 393-0007 | www.GETECP.com

CONFIDENTIAL. THIS DRAWING AND ITS CONTENTS ARE CONFIDENTIAL AND THE EXCLUSIVE PROPERTY OF EARTH CONTACT PRODUCTS, LLC. NO PUBLICATION, DISTRIBUTION, OR COPIES MAY BE MADE WITHOUT THE WRITTEN CONSENT OF ECP. ALL RIGHTS RESERVED UNDER COPYRIGHT LAW.

REV 0
SHEET 1 OF 1