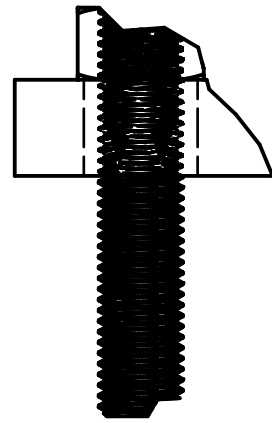
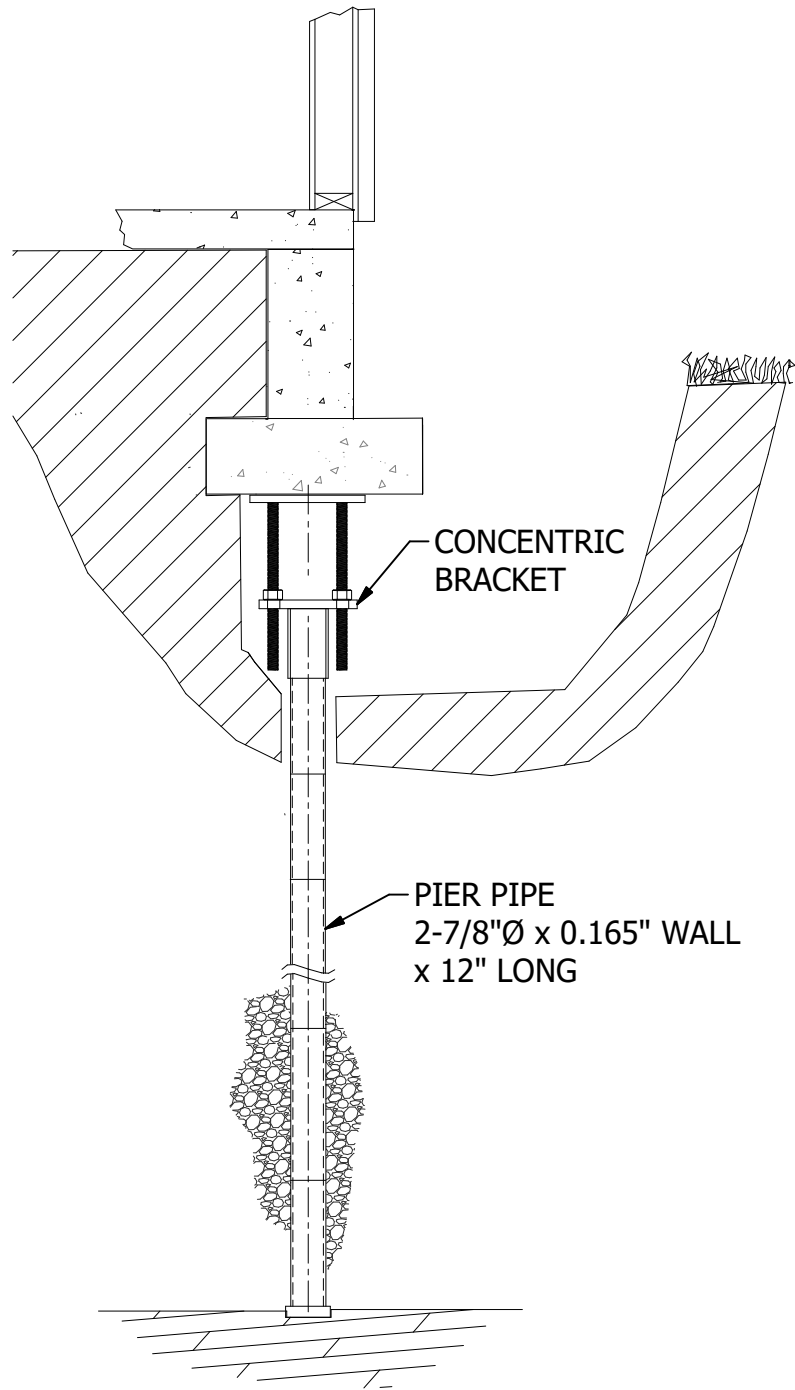
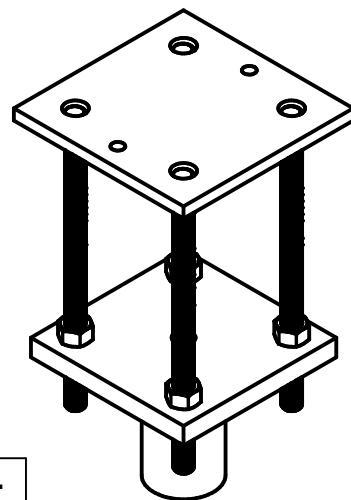
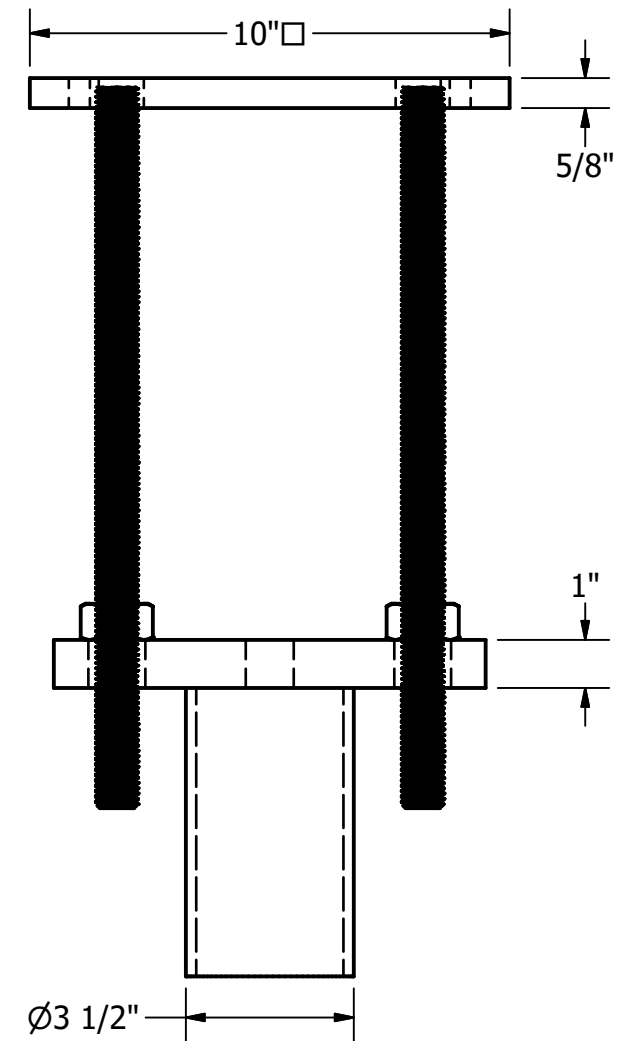
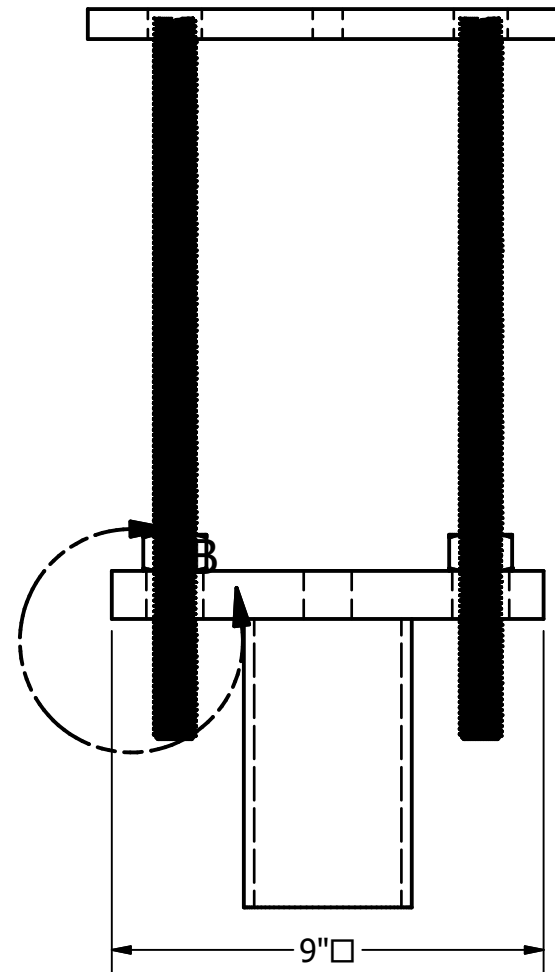


PPB-250 - CONCENTRIC BRACKET



DETAIL B
SCALE 1 / 2



NOTES:

1. BARE STEEL, OPTIONAL HOT DIP GALVANIZE PER ASTM A123 (LATEST REV.)
2. BRACKET MATERIAL 1" & 5/8" THICK HOT ROLLED STEEL PER ASTM A572 MIN. YIELD STRENGTH 50 KSI.
3. ALL WELDING TO BE DONE BY WELDERS CERTIFIED UNDER SECTION 5 OF THE AWS CODE D1.1
4. MANUFACTURER TO HAVE IN EFFECT INDUSTRY RECOGNIZED WRITTEN QUALITY CONTROL FOR ALL MATERIALS AND MANUFACTURING PROCESSES
5. COMPATIBLE WITH PPB-200-EPS (2-7/8"Ø PUSH PIER PIPE)

ITEM	PART NO.	DESCRIPTION	QTY.
1	PPB-250-BP1	LOWER SUPPORT PLATE	1
2	PPB-250-TP1	TOP PLATE	1
3	PPB-250-CP1	3" SCH40 PIPE x 6" LONG	1
4	HAT-WF08-15	WF-8 x 15" LONG (GRADE 75) ROD	4
5	HN-WF08	HEX NUT FOR WF-8 ROD	4

WORKING LOAD	27,000 LBS.
ULTIMATE LOAD	54,000 LBS.
LIFT CAPACITY	4 IN

DRAWN GDR	DATE 2/4/2025
DWG NO. SD-PPB-250	
DESCRIPTION CONCENTRIC BRACKET	
NOT TO SCALE ALL UNITS IN INCHES U.N.O.	



SIZE B	15612 S KEELER TERRACE OLATHE, KS 66062 (913) 393-0007 www.GETECP.com	REV 0
-----------	---	----------

CONFIDENTIAL. THIS DRAWING AND ITS CONTENTS ARE CONFIDENTIAL AND THE EXCLUSIVE PROPERTY OF EARTH CONTACT PRODUCTS, LLC. NO PUBLICATION, DISTRIBUTION, OR COPIES MAY BE MADE WITHOUT THE WRITTEN CONSENT OF ECP. ALL RIGHTS RESERVED UNDER COPYRIGHT LAW.

SHEET 1 OF 1