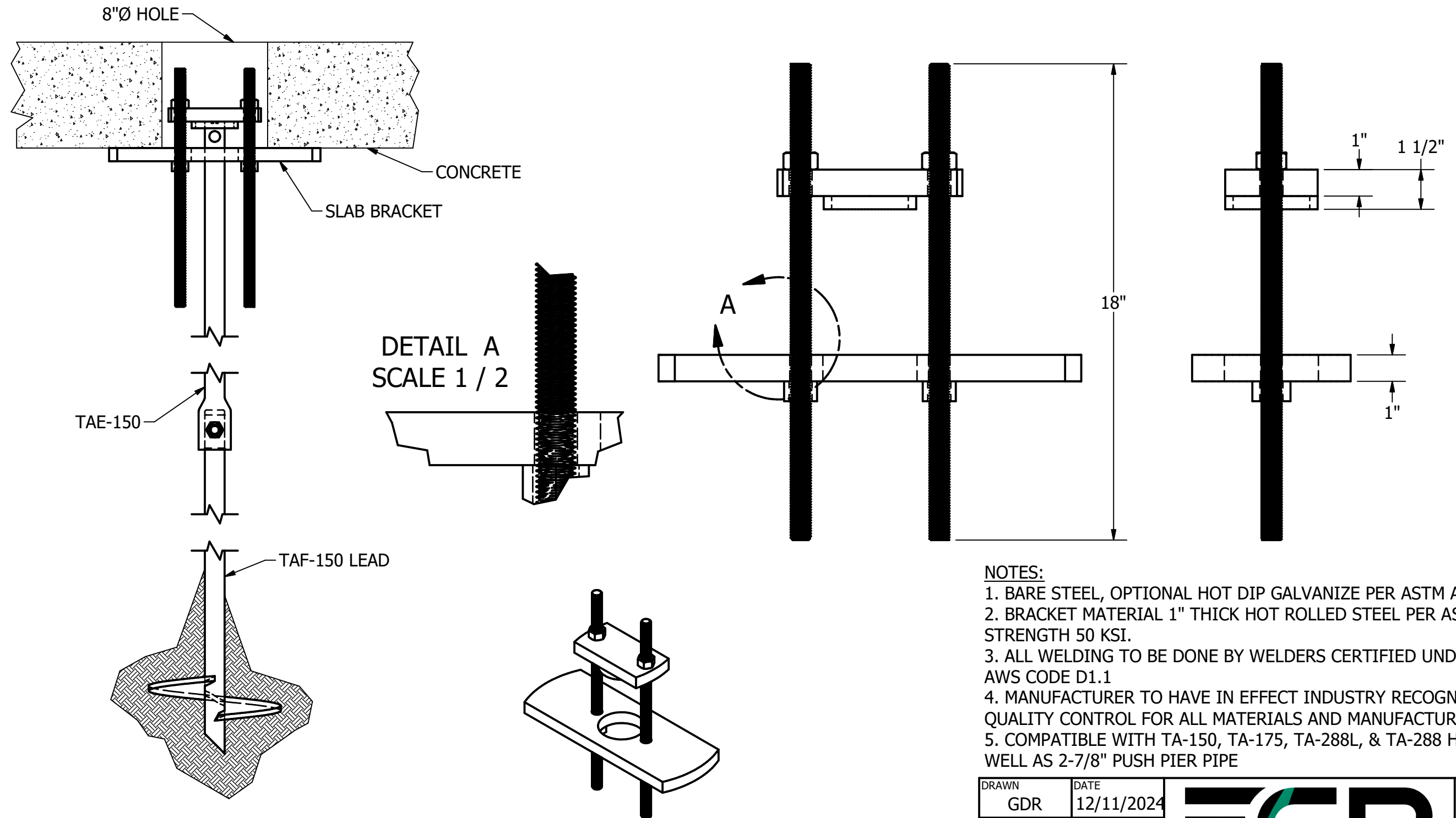


PPB-166 - HYDRAULIC LIFT SLAB BRACKET



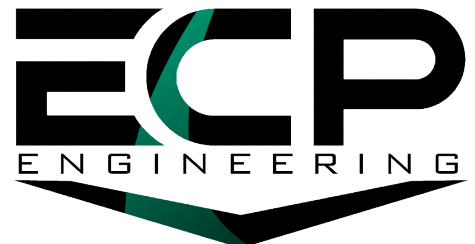
NOTES:

1. BARE STEEL, OPTIONAL HOT DIP GALVANIZE PER ASTM A123 (LATEST REV.)
2. BRACKET MATERIAL 1" THICK HOT ROLLED STEEL PER ASTM A572 MIN. YIELD STRENGTH 50 KSI.
3. ALL WELDING TO BE DONE BY WELDERS CERTIFIED UNDER SECTION 5 OF THE AWS CODE D1.1
4. MANUFACTURER TO HAVE IN EFFECT INDUSTRY RECOGNIZED WRITTEN QUALITY CONTROL FOR ALL MATERIALS AND MANUFACTURING PROCESSES
5. COMPATIBLE WITH TA-150, TA-175, TA-288L, & TA-288 HELICAL PILES, AS WELL AS 2-7/8" PUSH PIER PIPE

ITEM	PART NO.	DESCRIPTION	QTY.
1	PPB-166-LP1	LOWER SUPPORT PLATE	1
2	PPB-166-TC1	CAP PLATE	1
3	HATZ-075-018-CNZ	3/4-10 GRADE B7 ALL THREAD ROD x 18"	2
4	HATZ-075-018-CNZ	3/4-10 GRADE 5 HEX NUT	2

WORKING LOAD	11,000 LBS.
ULTIMATE LOAD	22,000 LBS.
LIFT CAPACITY	4 IN

DRAWN GDR	DATE 12/11/2024
DWG NO. SD-PPB-166	
DESCRIPTION HYDRAULIC LIFT SLAB BRACKET	
NOT TO SCALE ALL UNITS IN INCHES U.N.O.	



SIZE B	15612 S KEELER TERRACE OLATHE, KS 66062 (913) 393-0007 www.GETECP.com	REV 0
------------------	---	-----------------

CONFIDENTIAL. THIS DRAWING AND ITS CONTENTS ARE CONFIDENTIAL AND THE EXCLUSIVE PROPERTY OF EARTH CONTACT PRODUCTS, LLC. NO PUBLICATION, DISTRIBUTION, OR COPIES MAY BE MADE WITHOUT THE WRITTEN CONSENT OF ECP. ALL RIGHTS RESERVED UNDER COPYRIGHT LAW.

SHEET 1 OF 1