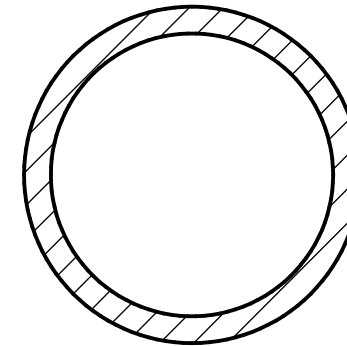
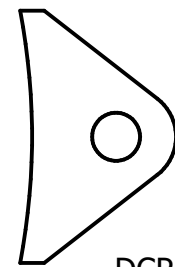
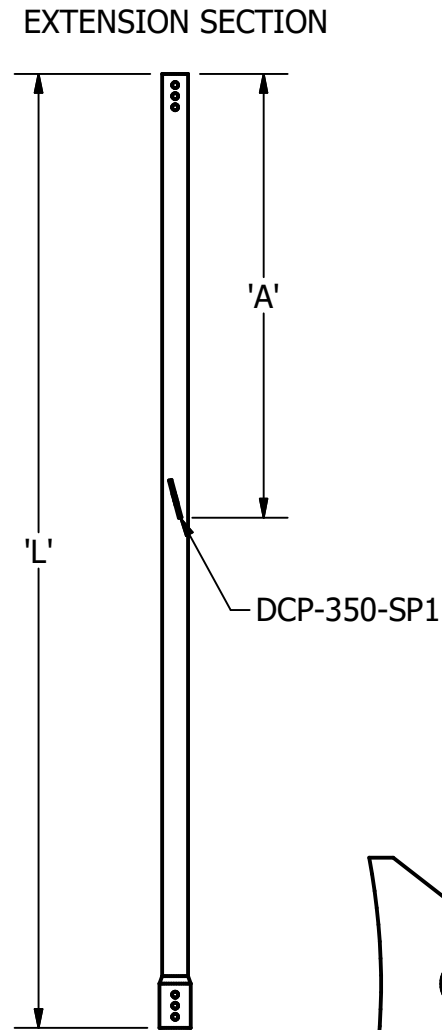
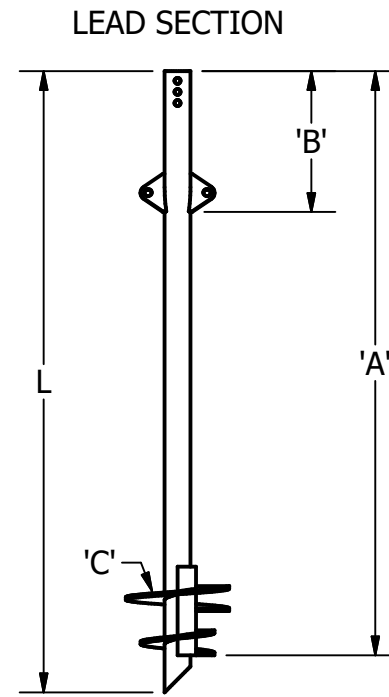
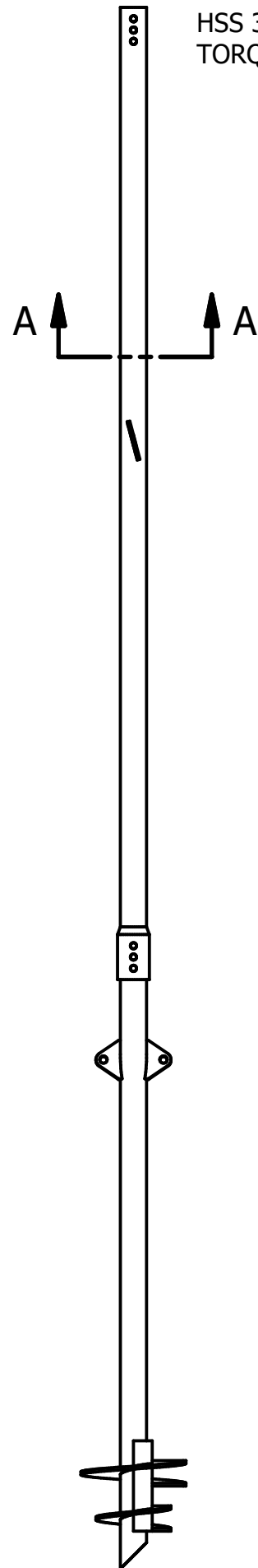


HSS 3 INCH SCH80 (3.5" x 0.300")
TORQUE: 13,000 FT-LB

DRIVECAST™

** NOTES **

1. ADD 'G' TO THE END OF THE PART NUMBER FOR GALVANIZED PRODUCT
2. LEAD AND EXTENSION SECTION LENGTHS AND HELIX SPACING ARE NOMINAL
3. PIPE SHAFT MATERIAL PER ASTM A500 GRADE B MIN YIELD 50KSI
4. HELIX MATERIAL LOW CARBON STEEL MEETING THE GENERAL REQUIREMENTS OF ASTM A572
5. HELICES 3/8" THICK EACH
6. COUPLING BOLTS: 3/4"Ø HEX HEAD PER ASTM J429 GRADE A BOLTS.
7. ADD 'NH' TO THE END OF THE CATALOG NUMBER FOR EXTENSIONS WITH NO HARDWARE INCLUDED FOR COUPLING
8. MANUFACTURER TO HAVE IN EFFECT INDUSTRY RECOGNIZED WRITTEN QUALITY CONTROL FOR ALL MATERIALS AND MANUFACTURING PROCESSES
9. ALL WELDING TO BE DONE BY WELDERS CERTIFIED UNDER SECTION 5 OF THE AWS CODE D1.1.
10. PADDLE EXTENDS FROM PERIMETER OF HSS TO OUTER EDGE OF LOWER/SMALLER HELIX. EXAMPLE: 10/14 = HELICES Ø10 AND Ø14 INCH. PADDLE SWEEPS Ø10 INCH.



SECTION A-A

DESCRIPTION	IMPERIAL	METRIC
SHAFT SIZE, OD	3.5 in	89 mm
SHAFT SIZE, ID	2.942 in	74.7 mm
MOMENT OF INERTIA (I)*	3.69 in ⁴	153.6 cm ⁴
SHAFT AREA (A)*	2.82 in ²	18.2 cm ²
SECTION MODULUS (SX-X)*	2.11 in ³	34.5 cm ³

PART #	DESCRIPTION	'L'	'A'	'B'	'C'
DCF-350-42 10-14	LEAD, 3.5" x 0.300", 10/14 X 3.5 FT, SP, DC	42	38		10/14
DCF-350-60 10-12	LEAD, 3.5" x 0.300", 10/14 X 5 FT, SP, DC	60	56		10/14
DCF-350-84 10-14	LEAD, 3.5" x 0.300", 10/14 X 7 FT, SP, DC	85	79	19	10/14
DCF-350-120 10-14	LEAD, 3.5" x 0.300", 10/14 X 10 FT, SP, DC	120	115	22 5/8	10/14
DCX-350-120	EXTENSION, 3.5" x 0.300", 10 FT, SP, DC	120	60		
DCX-350-60	EXTENSION, 3.5" x 0.300", 5 FT, SP, DC	60	30		
DCX-350-84	EXTENSION, 3.5" 0.300", 7 FT, SP, DC	84	42		
DCX-350-42	EXTENSION, 3.5" 0.300", 3-1/2 FT, SP, DC	42	21		
DCX-350-36	EXTENSION, 3.5" 0.300", 3 FT, SP, DC	36	18		

<p>CONFIDENTIAL: THIS DRAWING AND ITS CONTENTS ARE CONFIDENTIAL AND THE EXCLUSIVE PROPERTY OF EARTH CONTACT PRODUCTS, LLC. NO PUBLICATION, DISTRIBUTION, OR COPIES MAY BE MADE WITHOUT THE WRITTEN CONSENT OF ECP. ALL RIGHTS RESERVED UNDER THE COPYRIGHT LAWS.</p>	Earth Contact Products		
	TITLE DRIVECAST™ DCF-350 / DCX-350, STACKED PADDLE		
	SIZE A	CAT / PART / ASSY NO. SEE CHART	DWG NO. SD-DCX-350
DO NOT SCALE THIS DRAWING	DRN BY GDR	DATE 4/9/24	SHEET 1 OF 1