

LIVING THE STEEL LIFE

GETECP.COM



SPECIAL ISSUE:
DRIVEN RECAP

Issue No.003

The Steel Post

Table of Contents

3
PRODUCT
SPOTLIGHT

8
CALENDAR OF
EVENTS

4
NEW
FACE

9
DRIVEN
RECAP

5
VENDOR
SPOTLIGHT

10
DID YOU
KNOW?

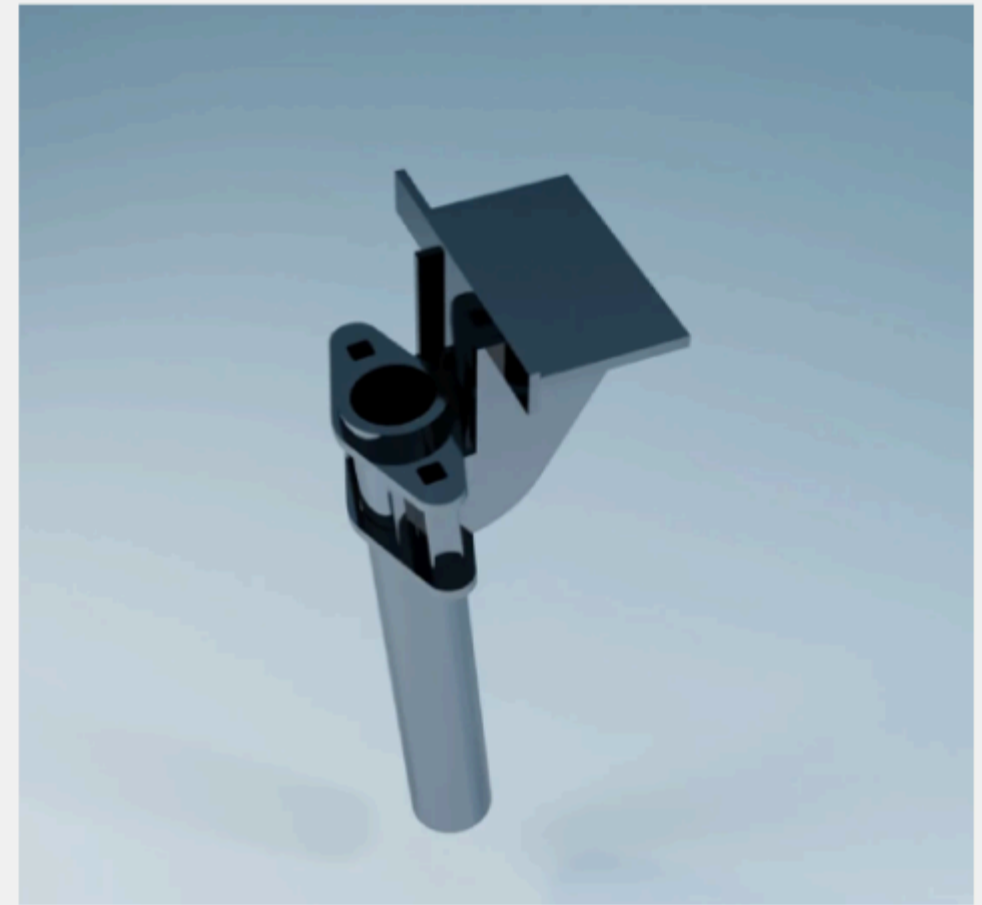
6
PARTNER
SPOTLIGHT

11
VENDORS

7
A LOOK INTO
THE SHOP



Product Spotlight



Low Profile Helical Bracket

We're excited to introduce our new **Low-Profile Helical Bracket**, designed specifically for residential slab-on-grade applications. After hearing your feedback, we developed this sleek solution that pairs perfectly with our 2-7/8" light wall helical piles.

While we're still awaiting the official testing results, we expect the Low-Profile Bracket to be rated at 40 kips. It's compact and efficient—not built for cathedral-level lifts, but ideal for the majority of residential projects. If you've been wanting a bracket that eliminates the bulky back seating plate and stays below the soil line, this is your answer. Stay tuned for more details!



Parallel



Perpendicular

Also, the **Interior Wall Brace Systems**, also known as SecureLock™. Available in two models—Perpendicular and Parallel, named for their orientation with respect to floor joists—these braces are engineered to secure basement walls against up to 22,500 lbs. of hydrostatic pressure.

Whether you're facing property line restrictions, obstructing trees, or just want to avoid digging, these Interior Wall Braces are the perfect solution for reinforcing walls where exterior tiebacks aren't feasible. No more worrying about space limitations—our braces give you the strength you need, right where you need it.

Why Choose Interior Wall Braces?

- Withstands 22,500 lbs. of force
- Perfect for tight spaces with no room for exterior tiebacks
- Easy installation, minimal disruption

New Face

Meet the Newest Member of the ECP Team!

At Earth Contact Products, growth is at the heart of everything we do. Whether it's expanding our product lines, improving our processes, or building our talented team, we're always striving for more. As part of this ongoing growth, we're excited to introduce the newest face at ECP!

BRYCE MITCHELL, PRODUCTION

Hi, I'm Bryce Mitchell. I spent many years playing baseball all the way through college at the University of Central Oklahoma after graduating from Blue Valley Northwest in Overland Park, KS. My free time consists of watching movies and golfing with friends. When I can, I love traveling to the mountains to snowboard for a weekend, mostly Colorado, and hoping to make it up to Montana or Utah in the coming years. I look forward to continuing learning from our team about foundation repair and the newest technology to continue provide foundation solutions around the globe.

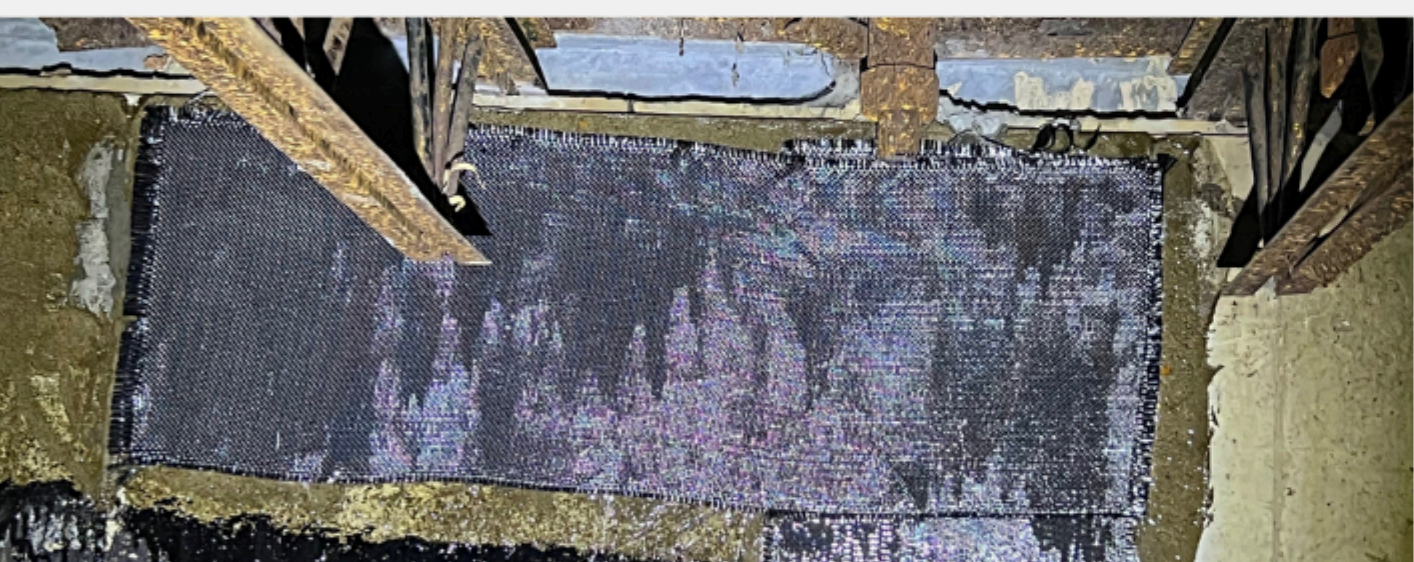


Vendor Spotlight



Rhino Carbon Fiber is an industry leader in concrete crack repair and structural strengthening, providing strong, efficient and easy-to-use products. Continually innovating, Rhino Carbon Fiber creates cost and labor-effective solutions for residential and commercial applications. Their CFRP (Carbon Fiber Reinforced Polymer) products are among the highest quality available, meticulously engineered, tested and quality controlled to exceed technical project requirements. Whether addressing bowing walls or foundation cracks, RHINO has the perfect solution.

Leveraging the tensile properties of carbon fiber, RHINO has also developed Concrete Crack Lock (CCL) stitches, a superior concrete crack stabilizing product that outperforms traditional rebar. Carbon fiber is lightweight, easy-to-install, ten times stronger than steel and non-corrosive, eliminating the need for maintenance. With Rhino Carbon Fiber, you get unmatched durability and reliability for all your concrete repair needs.



Project of the Year Submission

Acculift Foundation Repair, a long-standing partner of Earth Contact Products and the recent winner of our prestigious Residential Project of the Year Award at this year's DRIVEN.

Acculift's award-winning project was nothing short of extraordinary. In collaboration with EcoSpect, they took on the monumental task of addressing multiple foundation failures across 225 buildings. This extensive endeavor involved over 1,000,000 square feet of crawlspace area and required 2500 square feet of carbon fiber, 2000 custom structural braces, and more than 100 ECP crawlspace support posts.

Seventeen of the buildings demanded additional engineered solutions, including steel piercing and fiber-reinforced polymer stabilization. Acculift and EcoSpect worked closely with ECP to design and fabricate custom steel brace systems that permanently reinforced 2000 deteriorated steel bar joists. This innovative approach not only provided a structural solution but also saved the client approximately \$3.8 million by keeping the project within financial limits and avoiding building condemnation under city codes.

The success of this massive project solidified Acculift, EcoSpect, and ECP as the leading contractors in the region, outperforming competing bids and showcasing their expertise in delivering custom, cost-effective solutions for large-scale structural repairs.

Congratulations to Acculift Foundation Repair for their outstanding achievement! We're honored to have them as a valued partner.

A Look Into the Shop



TruLaser Tube 5000

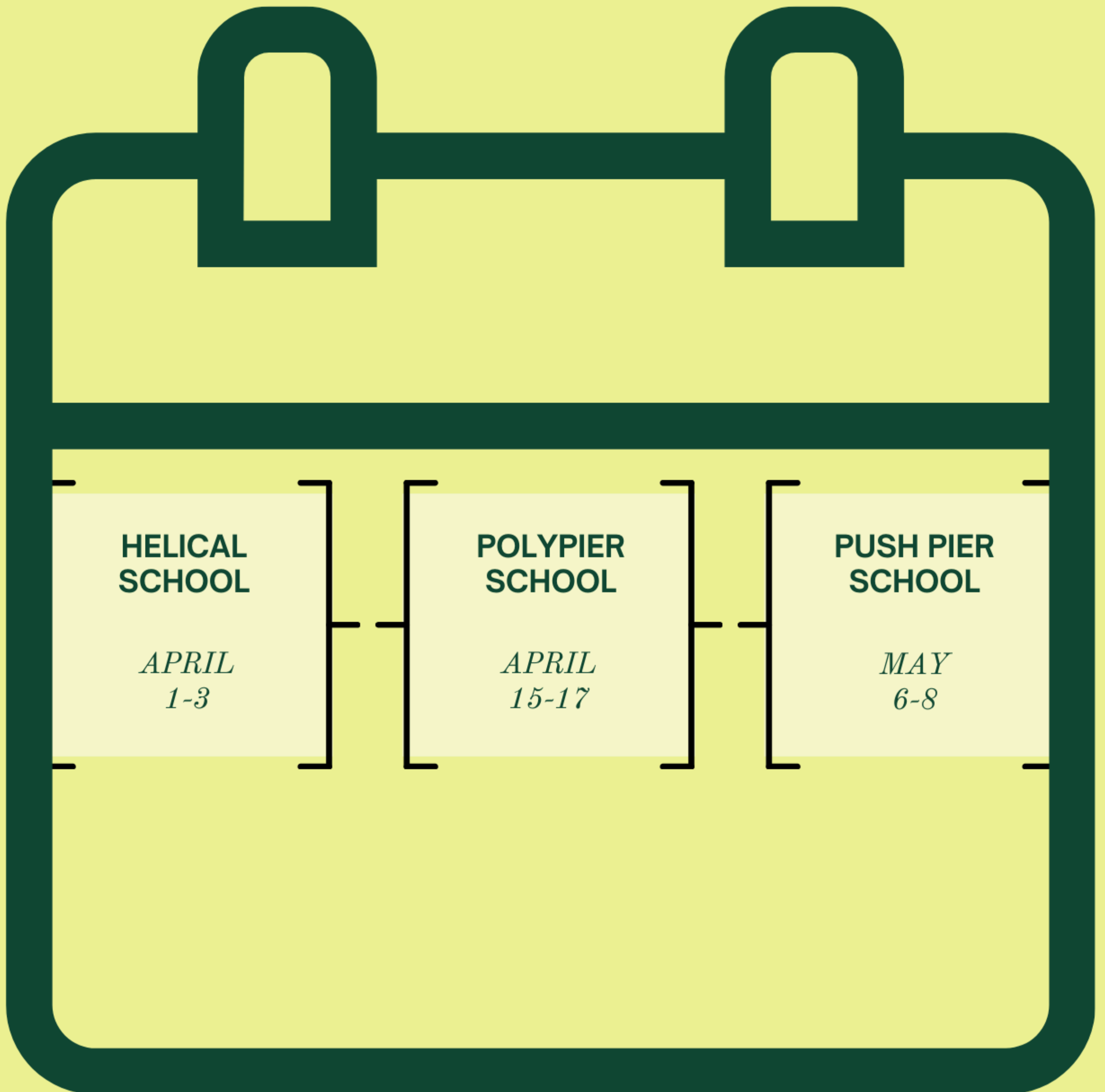
At Earth Contact Products, we are always looking for ways to innovate and improve our processes. Over the past year, we've invested in cutting-edge equipment to enhance our manufacturing capabilities and ensure we continue providing top-tier products. One of our most exciting recent investments is the TruLaser Tube 5000 Fiber, which has revolutionized our production of tubular helical products.

This machine, designed with advanced solid-state laser technology, allows for incredibly fast and efficient processing of a wide range of tubes and profiles. Its increased laser power means we can now handle even heavier tubes and cut through thicker materials with precision, reducing lead times for our customers.

The TruLaser Tube 5000 Fiber didn't just arrive overnight—it took over a year to manufacture and was delivered to our facility two months ago. It enables us to process up to 5-1/2" OD helical tubular products. Our team is already seeing significant improvements in both efficiency and quality, setting the stage for even more innovation in the future.

Stay tuned for our upcoming product launches featuring the capabilities of this new equipment, and see how we are transforming foundation solutions to meet the demands of today's projects.

2025 Training *calendar*



As we wrap up the year, we're already looking ahead to an exciting lineup of training courses for 2025. Stay tuned for January when we'll unveil our upcoming fall 2025 schedule, filled with opportunities to grow, learn, and achieve your goals.

Mark your calendars and keep an eye on your inbox—you won't want to miss out on what's coming!

DRIVEN recap

September 23-25 2024

Thank you to everyone who made DRIVEN 2024 such a success! Your energy, engagement, and expertise helped make this year's event one to remember.

Held in Kansas City, DRIVEN 2024 brought together contractors, industry leaders, and ECP team members for a dynamic experience filled with valuable learning opportunities and great discussions.

A highlight of the event was the Project of the Year awards, where we celebrated exceptional projects that showcased creativity and craftsmanship. The inspiring entries were a testament to the incredible work being done in our industry, and we're honored to have had the chance to spotlight your achievements. Thank you once again for being part of DRIVEN 2024. We're already looking forward to making DRIVEN 2025 even more impactful as we head to Myrtle Beach October 7-9 2025 . Keep an eye out for updates—we can't wait to see you there!



STEEL JACKET AWARD



CORNHOLE WINNERS



POKER NIGHT



WORLDS BEST BBQ

Did You Know?

ECP'S NEW TRAINING FACILITY

We are thrilled to announce the opening of our training facility, right here at ECP! Starting next year, you'll have the opportunity to learn in a hands-on environment, directly adjacent to where our products are manufactured. We can't wait to welcome you to our new space and provide you with a new learning experience! Stay tuned for more details on upcoming training sessions and workshops.





• DIVISION OF SUPERIOR TRUCK EQUIPMENT •



MY FOUNDATION REPAIRS BY ECP

