



INSTALLATION GUIDE FOR SECURE LOCK



INTERIOR WALL BRACE – PARALLEL

Table of Contents

Survey Site.....	1
Preparing Installation Area	2
Securing the I-Beam & Floor Bracket.....	2
Reinforcing Floor Joists for Support	2
Installing the Internal Wall Brace.....	3
Attaching Support Strap.....	4
Final Inspection & Adjustments.....	4

Survey Site

- ✓ Call 811, the national call-before-you-dig phone number, to request that the approximate location of buried utilities be marked with paint or flags so that you don't unintentionally dig into any underground utilities
- ✓ Evaluate and record Benchmarks for your job, (An established elevation i.e. Manhole Cover, Fire Hydrant or Gas Meter)
- ✓ Check local laws and regulations regarding licenses and permits
- ✓ Follow all guidelines set by the Occupational Safety and Health Administration (OSHA)
- ✓ Identify and overcome obstacles
- ✓ Take before and after photos
- ✓ For additional product information visit us at getecp.com



Preparing Installation Site

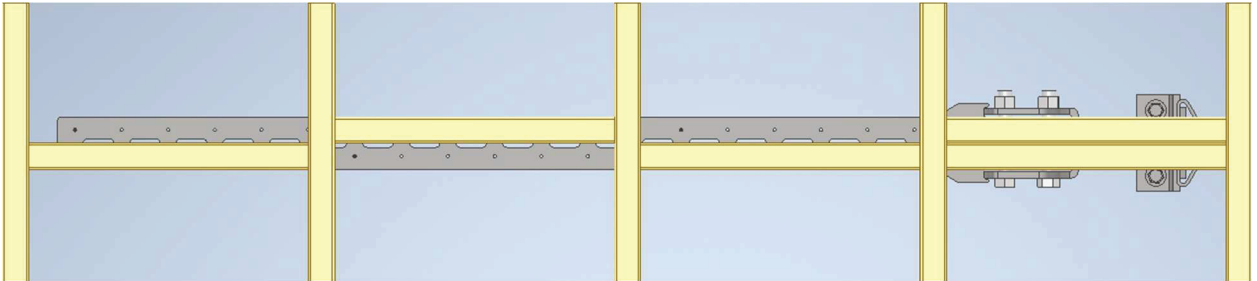
- Remove the floor to the footing at the edge of the wall where the I-beam will be placed.

Securing the I-Beam & Floor Bracket

- Place I-beam against the wall at the point of concern. Grout the bottom of the I-beam to the floor.
- Place floor bracket against the I-beam and secure via concrete screws.
- Attach beam capture to the I-beam close to the top.

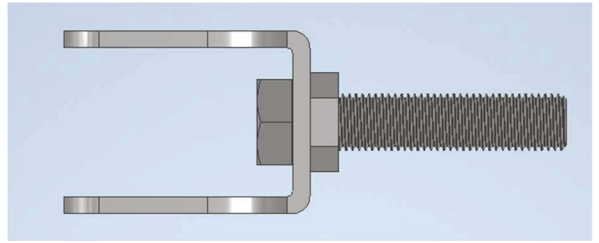
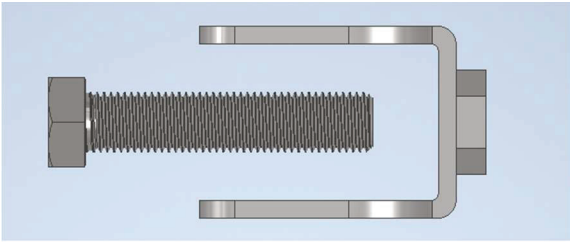
Reinforcing Floor Joists for Support

- Cut 5 wood beams to match the span of the floor joists.
- Secure the wood beams into the floor joists aligned with the I-beam. Use two beams within the joists closest to the I-beam and one in all subsequent floor joist spans.
- These wood beams will hold the support strap, so each wood beam placed within the joists needs to align with the screw holes in the support strap as shown in the image below.

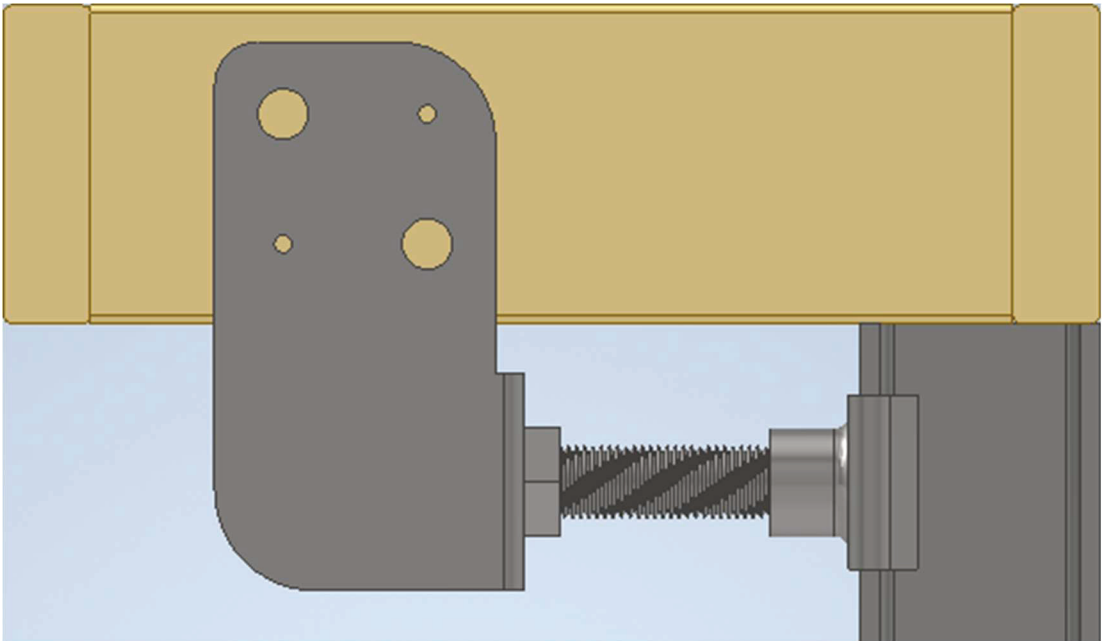


Installing the Internal Wall Brace Crux

- Screw the Main Hex Bolt into the Internal Wall Brace Crux. See images below.



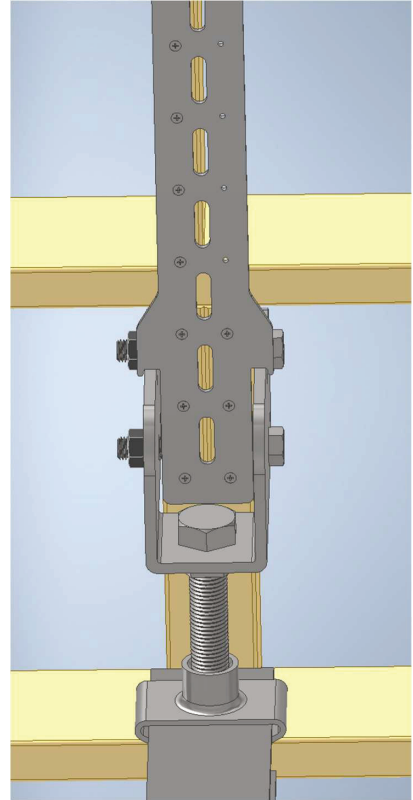
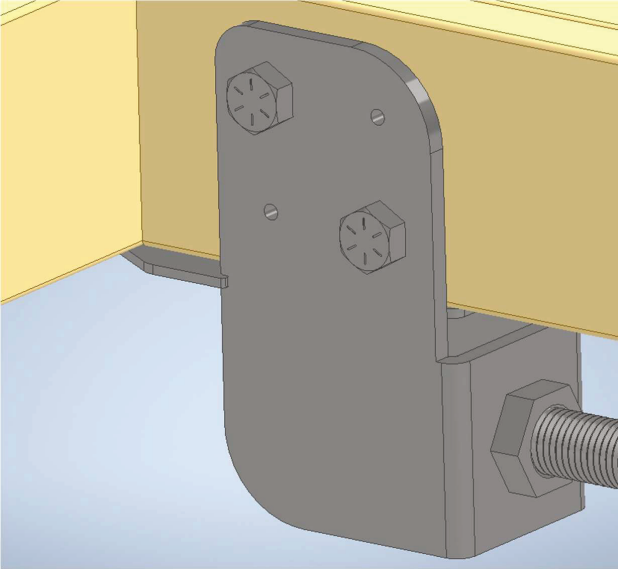
- Put the Main Hex Bolt into the beam capture. The upper half of the Internal Wall Brace Crux should slide over the double wood beams placed into the floor joist span. See image below.



- Trace the bolt holes.
- Drill 3/4" (0.75 inch) holes through the wood where you just traced.
- Put the Interior Wall Brace Crux back up and secure with Wood Bolts.
- Fasten Wood Bolts with Hex Nuts.

Attaching the Support Strap

- Place the Support Strap immediately behind the Interior Wall Brace Crux.
- Connect the strap to the floor joists and wood inserts placed into the floor joist spans via the Wood Screws.



Final Inspection and Adjustments

- Ensure all components are properly secured.
- Verify stability and alignment of the installed system.



Certified Installer



**15612 S. Keeler Terrace
Olathe, KS 66062
Phone: 913-298-6749
Fax: 913-393-0008
Toll Free: 866-467-2746
www.getecp.com**