



ECP Crawl Space Vapor Barrier

ECP Vapor Barriers Prevent

- water vapor migration
- radon and methane gas
- mold, mildew and fungus
- wood rot
- heat loss (via damp insulation)
- allergens
- water damage



ECP's crawl space vapor barrier is a high performance crawl space vapor barrier designed to prevent moisture from entering the crawl space. The ECP 10mil and 20mil vapor barriers guard against mold, mildew, allergens, fungus, radon gas, methane gas, heat loss due to damp insulation, wood rot, and overall degradation of the crawl space. ECP's CVB 10 is a white, triple-ply, virgin polyethylene membrane. Manufactured using woven high-density fibers yielding the highest strength to weight ratio, tensile strength, tear resistance, bursting strength and puncture resistance of any product produced of its kind. ECP's CVB 20 is heavy duty material that is white with a blue underside, heavy duty multi-ply cord reinforced polyethylene and contains fire rated additives.

Advantages Include:

- Superior Puncture and Tear Resistance
- Provides a Bright, Clean, Healthy Crawl Space
- Ensures an Effective Seal Against Pressure Driven Moisture
- Transforms Crawl Space Into a Usable Space
- Effective as a Radon and Methane Gas Barrier
- Exceeds All ASTM E 1745 Class A, B and C Requirements

Creating a healthy home starts from the ground up. Crawl spaces are full of moisture and without a proper vapor barrier the moisture has nowhere to go but up. Without complete protection your living space and contents are in jeopardy. By installing ECP's CVB 10 or CVB 20, you can rest assured that you are using the best crawl space protection available.

**EARTH
CONTACT
PRODUCTS**

1-866-327-0007

15612 S Keeler Terr.
Olathe, Ks 66062
Phone: 913-393-0007
Fax: 913-393-0008
info@getecp.com
www.getecp.com

ECP

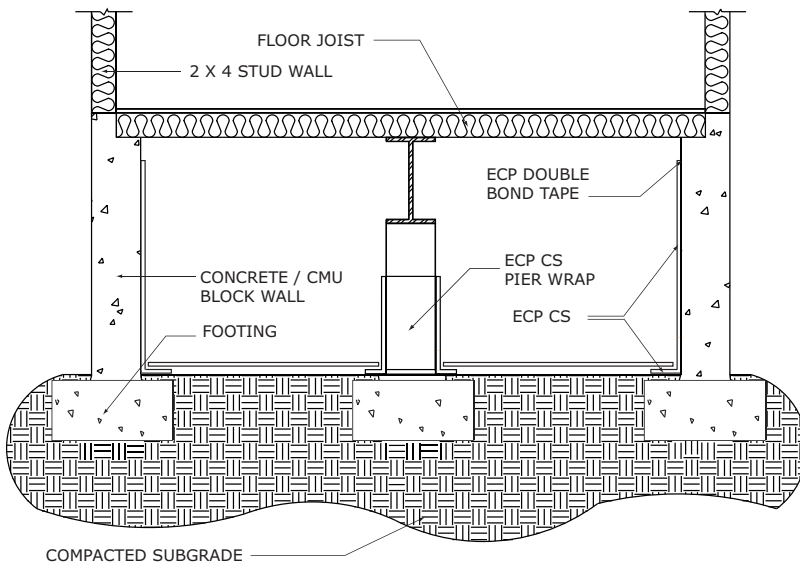


ECP CVB 10 & CVB 20

ECP Crawl Space Vapor Barrier

PROPERTIES	TEST METHOD	ECP CVB 20
Appearance		White/Blue
Thickness, Normal		20 mil max/ 16 mil min.
Weight per OZ./YD2	ASTM D-3776	9.93 oz./yd2
Construction		Multi ply polyethylene w/ polyester cord reinforcement
Tensile Grab	ASTM D-751	Warp /Fill 61.7 / 47.4
Elongation % Peak 1"	ASTM D-751	Warp /Fill 456.6 / 499.6
Trapezoid Tear LBS:		Warp /Fill 61.7 / 47.4
Maximum Use Temp.		180 F
Vapor Transmission Procedure B temp: 73.4 F Humidity: 50% RH	ASTM E-96	6 1.7 gms./sq.meter/24 hrs.
Flame Spread Index	ASTM E-84-95	0
Smoke Developed Value	ASTM E-84-95	45

PROPERTIES	TEST METHOD	ECP CVB 10
Test Results - Independent Test Facility		English
Thickness, Nominal		10-mil
Weight Per MSF		36 lbs
Classification	ASTM E 1745	CLASS A, B, C
Tensile Strength (New Material)	ASTM E 154, Sec. 9	136 lbf./in. (MD)
Tensile Strength (After Soaking)	ASTM E 154, Sec. 9	140 lbf./in. (MD)
Tear Strength	ASTM D 751 Tongue	54 lbs. (warp)
Bursting Strength	ASTM D 751 Mullen	318 lbs.
Puncture Resistance	ASTM D 1709	15,839 grams
Puncture Resistance	ASTM D 5602	76 lbs.
Maximum Use Temperature		180° F
Water Vapor Permeance	ASTM E 96/154 Sec. 7	.0016 perms



**EARTH
CONTACT
PRODUCTS**

1-866-327-0007

15612 S Keeler Terr.
Olathe, Ks 66062
Phone: 913-393-0007
Fax: 913-393-0008
info@getecp.com
www.getecp.com

